

**TECHNICAL MANUAL**

**DIRECT SUPPORT AND GENERAL SUPPORT**

**MAINTENANCE REPAIR PARTS AND**

**SPECIAL TOOLS LISTS**

**(INCLUDING DEPOT MAINTENANCE REPAIR**

**PARTS AND SPECIAL TOOLS)**

**FOR**

**MOTOR-GENERATOR PU-545/A**

**(NSN 6125-00-958-6915)**

---

**HEADQUARTERS, DEPARTMENT OF THE ARMY**

**JANUARY 1978**



TECHNICAL MANUAL }  
 NO. 11-6125-240-34P }

HEADQUARTERS  
 DEPARTMENT OF THE ARMY  
 WASHINGTON, DC, 3 January 1977

**DIRECT SUPPORT AND GENERAL SUPPORT MAINTENANCE  
 REPAIR PARTS AND SPECIAL TOOLS LISTS  
 (INCLUDING DEPOT MAINTENANCE REPAIR  
 PARTS AND SPECIAL TOOLS)  
 FOR  
 MOTOR-GENERATOR PU-545/A  
 (NSN 6125-00-958-6915)**

*Current as of 23 August 1977*

**REPORTING OF ERRORS**

You can improve this manual by recommending improvements using DA Form 2028-2 (Test) located in the back of the manual. Simply tear out the self-addressed form, fill it out as shown on the sample, fold it where shown, and drop it in the mail.

If there are no blank DA Form 2028-2 (Test) in the back of your manual, use the standard DA Form 2028 (Recommended Changes to Publications and Blank Forms) and forward to the Commander, US Army Electronics Command, ATTN: DRSEL-MA-Q, Fort Monmouth, NJ 07703.

In either case a reply will be furnished direct to you.

**Table of Contents**

		Page	Illus Figure
SECTION	I. Introduction.. . . . .	1	
	II. Repair parts list . . . . .	5	
GROUP	00 Motor-Generator PU-545/A . . . . .	5	1
	01 Regulator Section (CSV1186-1, CSV2215-2, CSV2215-3) . . . . .	9	2-5
	02 Generator Section (MGE23-400, MGE23-400A, MGE23-500A) . . . . .	23	6
SECTION	III. Special tools list (Not applicable)		
	IV. National stock number and part number index . . . . .	27	

\*This manual supersedes TM 11-6125-240-34P, 23 October 1975.



# SECTION I

## INTRODUCTION

---

### 1. Scope

This manual lists spares and repair parts; special tools; special test, measurement, and diagnostic equipment (TMDE), and other special support equipment required for performance of direct support and general support maintenance of the PU-545/A. It authorizes the requisitioning and issue of spares and repair parts as indicated by the source and maintenance codes.

### 2. General

This Repair Parts and Special Tools List is divided into the following sections:

*a. Section I. Repair Parts List.* A list of spares and repair parts authorized for use in the performance of maintenance. The list also includes parts which must be removed for replacement of the authorized parts. Parts lists are composed of functional groups in numeric sequence, with the parts in each group listed in figure item number sequence.

*b. Section III. Special Tools List.* Not applicable.

*c. Section IV. National Stock Number and Part Number Index.* A list, in National item identification number (NIIN) sequence, of all National stock numbers (NSN) appearing in the listings, followed by a list, in alphameric sequence, of all part numbers appearing in the listings. National stock numbers and part numbers are cross-referenced to each illustration figure and item number appearance.

### 3. Explanation of Columns

*c. Illustration.* This column is divided as follows:

(1) *Figure number.* Indicates the figure number of the illustration on which the item is shown.

(2) *Item number.* The number used to identify item called out in the illustration.

*b. Source, Maintenance, and Recoverability (SMR) Codes.*

(1) *Source Code.* Source codes indicate the manner of acquiring support items for maintenance, repair, or overhaul of end items. Source codes are entered in the first and second positions of the Uniform SMR Code format as follows:

*Code*

*Definition*

PA— Item procured and stocked for anticipated or known usage.

XD—A support item that is not stocked. When required, item will be procured through normal supply channels.

#### NOTE

Cannibalization or salvage may be used as a source of supply for any items source coded above except those coded XA and aircraft support items as restricted by AR 700-42.

(2) *Maintenance code.* Maintenance codes are assigned to indicate the levels of maintenance authorized to USE and REPAIR support items. The maintenance codes are entered in the third and fourth positions of the Uniform SMR Code format as follows:

(a) The maintenance code entered in the third position will indicate the lowest maintenance level authorized to remove, replace, and use the support item. The maintenance code entered in the third position will indicate one of the following levels of maintenance:

*Code*

*Application/Explanation*

F—Support item is removed, replaced, used at the direct support level.

H—Support item is removed, replaced, used at the general support level.

(b) The maintenance code entered in the fourth position indicates whether the item is to be repaired and identifies the lowest maintenance level with the capability to perform complete repair (i.e., all authorized maintenance functions). This position will contain one of the following maintenance codes:

*Code*

*Application/Explanation*

H —The lowest maintenance level capable of complete repair of the support item is the general support level.

Z—Nonreparable. No repair is authorized.

(3) *Recoverability code.* Recoverability codes are assigned to support items to indicate the disposition action on unserviceable items. The recoverability code is entered in the fifth position of the Uniform SMR Code format as follows:

Recoverability  
codes

Definition

Z—Nonreparable item. When unserviceable, condemn and dispose at the level indicated in position 3.

H—Reparable item. When uneconomically reparable, condemn and dispose at the general support level.

D—Reparable item. When beyond lower level repair capability, return to depot. Condemnation and disposal not authorized below depot level.

*c. National Stock Number.* Indicates the National stock number assigned to the item and will be used for requisitioning purposes.

*d. Part Number.* Indicates the primary number used by the manufacturer (individual, company, firm, corporation, or Government activity), which controls the design and characteristics of the item by means of its engineering drawings, specifications, standards, and inspection requirements to identify an item or range of items.

**NOTE**

When a stock numbered item is requisitioned, the repair part received may have a different part number than the part being replaced.

*e. Federal Supply Code for Manufacturer (FSCM).* The FSCM is a 5-digit numeric code listed in SB 708-42 which is used to identify the manufacturer, distributor, or Government agency, etc.

*f. Description.* Indicates the Federal item name and, if required, a minimum description to identify the item.

*g. Unit of Measure (U/M).* Indicates the standard of the basic quantity of the listed item as used in performing the actual maintenance function. This measure is expressed by a two-character alphabetical abbreviation (e.g., ea, in, pr, etc). When the unit of measure differs from the unit of issue, the lowest unit of issue that will satisfy the required units of measure will be requisitioned.

*h. Quantity Incorporated in Unit.* Indicates the quantity of the item used in the breakout shown on the illustration figure, which is prepared for a functional group, subfunctional group, or an assembly.

**4. Special Information**

The following publication pertains to the PU-545/A and its components:

TM 11-6125-240-12, Motor-Generator PU-545/A

**5. How to Locate Repair Parts**

*a.* When National stock number or part number is unknown.

(1) *First.* Using the table of contents, determine the functional group within which the item belongs. This is necessary since illustrations are prepared for functional groups and listings are divided into the same groups.

(2) *Second.* Find the illustration covering the functional group to which the item belongs.

(3) *Third.* Identify the item on the illustration and note the illustration figure and item number of the item.

(4) *Fourth.* Using the Repair Parts Listing, find the figure and item number noted on the illustration.

*b.* When National stock number or part number is known.

(1) *First.* Using the Index of National Stock Numbers and Part Numbers, find the pertinent National stock number or part number. This index is in NIIN sequence followed by a list of part numbers in alphameric sequence, cross-referenced to the illustration figure number and item number.

(2) *Second.* After finding the figure and item number, locate the figure and item number in the repair parts list.

**6. Abbreviations**

Not applicable.

(Next printed page is 4.)



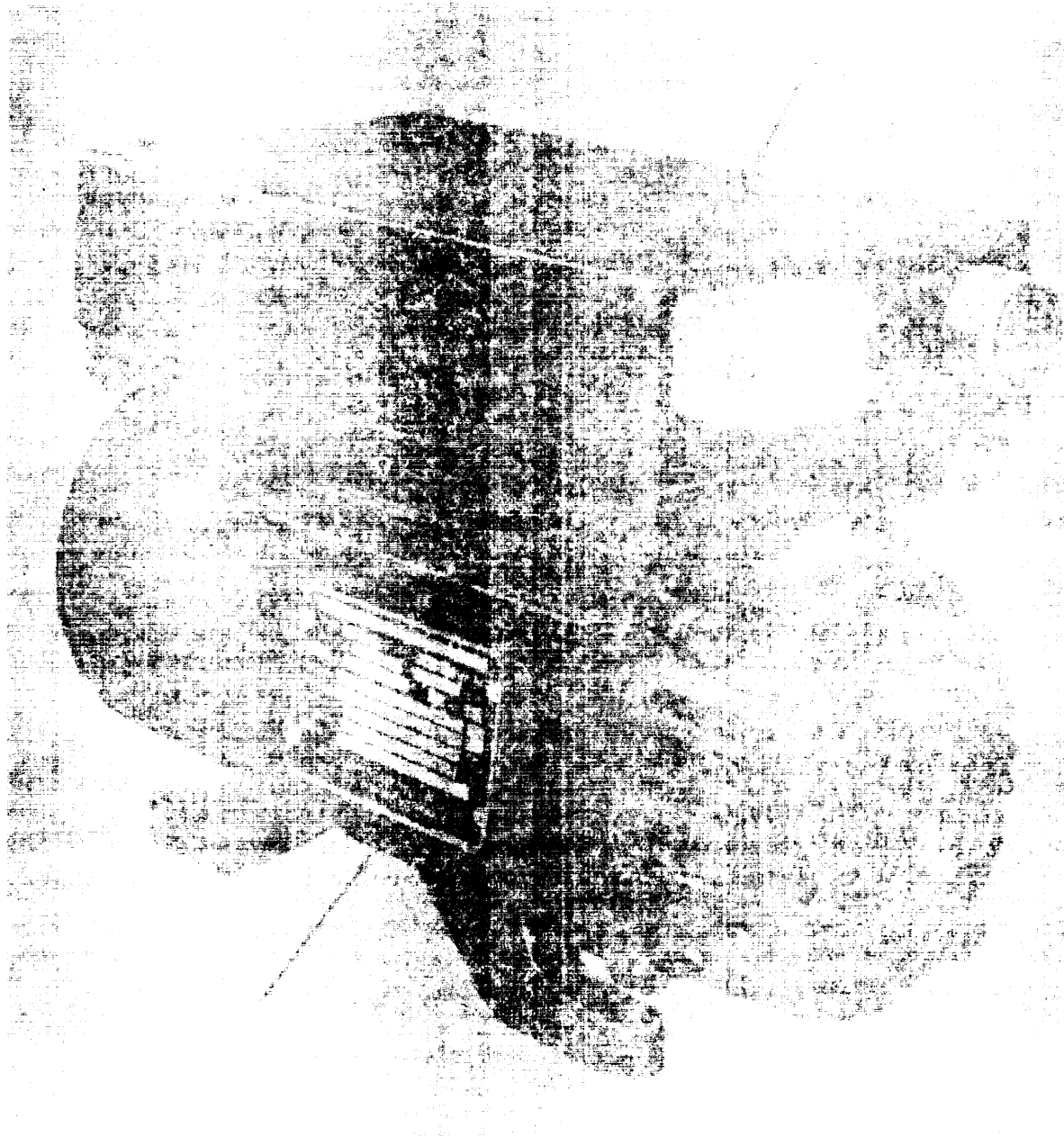


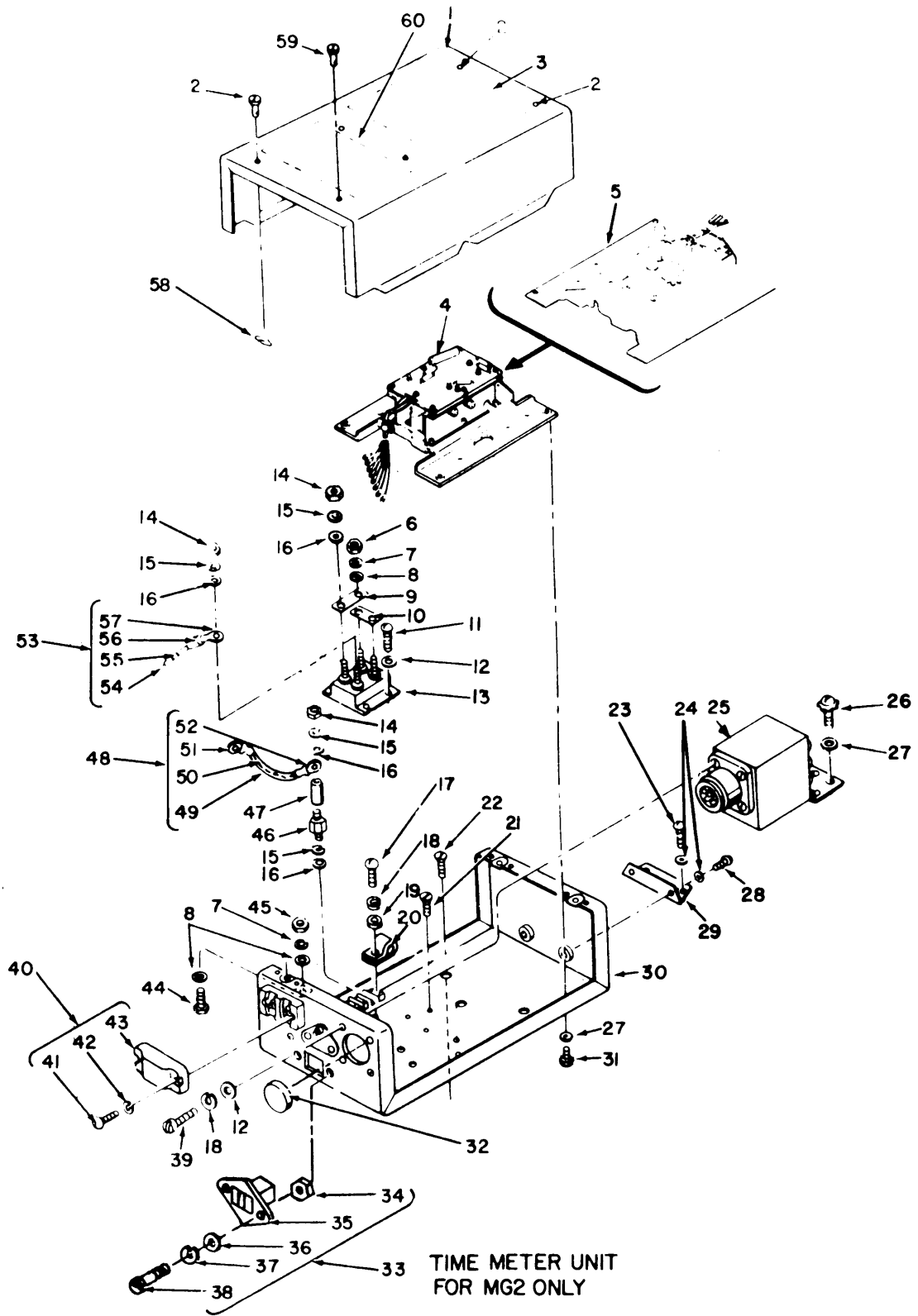
FIGURE 1. Motor-Generator PU-545/A.



SECTION II

(1) ILLUSTRATION (A) FIG NO	(2) (B) ITEM NO	(3) SMR CODE	(4) NATIONAL STOCK NUMBER	(5) PART NUMBER	(6) FSCM	(6) DESCRIPTION	(7) USABLE ON CODE	(7) U/M	(8) QTY INC IN UNIT
						GROUP 00 MOTOR-GENERATOR PU-545/A			
1	1	PAFHD	6110-00-229-8137	CSV2215-2	07639	REGULATOR,VOLTAGE SELECT		EA	1
1	1	XDFHD		CSV1186-1	07639	REGULATOR,VOLTAGE SELECT		EA	1
1	1	PAFHD	6110-00-497-9074	CSV2215-3	07639	REGULATOR,VOLTAGE SELECT		EA	1
1	2	XDHHD		MGE23-500A	07639	ROTATING SECTION USED ON REGULATOR,VOLTAGE CSV2215-3		EA	1
1	2	PAHHD	6125-00-958-6915	MGE23-400	07639	ROTATING SECTION USED ON REGULATOR,VOLTAGE CSV1186-1		EA	1
1	2	PAHHD	6125-00-958-6915	MGE23-400A	07639	ROTATING SECTION USED ON REGULATOR,VOLTAGE CSV2215-2		EA	1





PARTS LOCATION EXPLODED VIEW

ELOHK002

Figure 2. Regulator Section (CSV1186-1, CSV2215-2, CSV2215-3), Regulator Housing Assembly (Sheet 1 of 2).

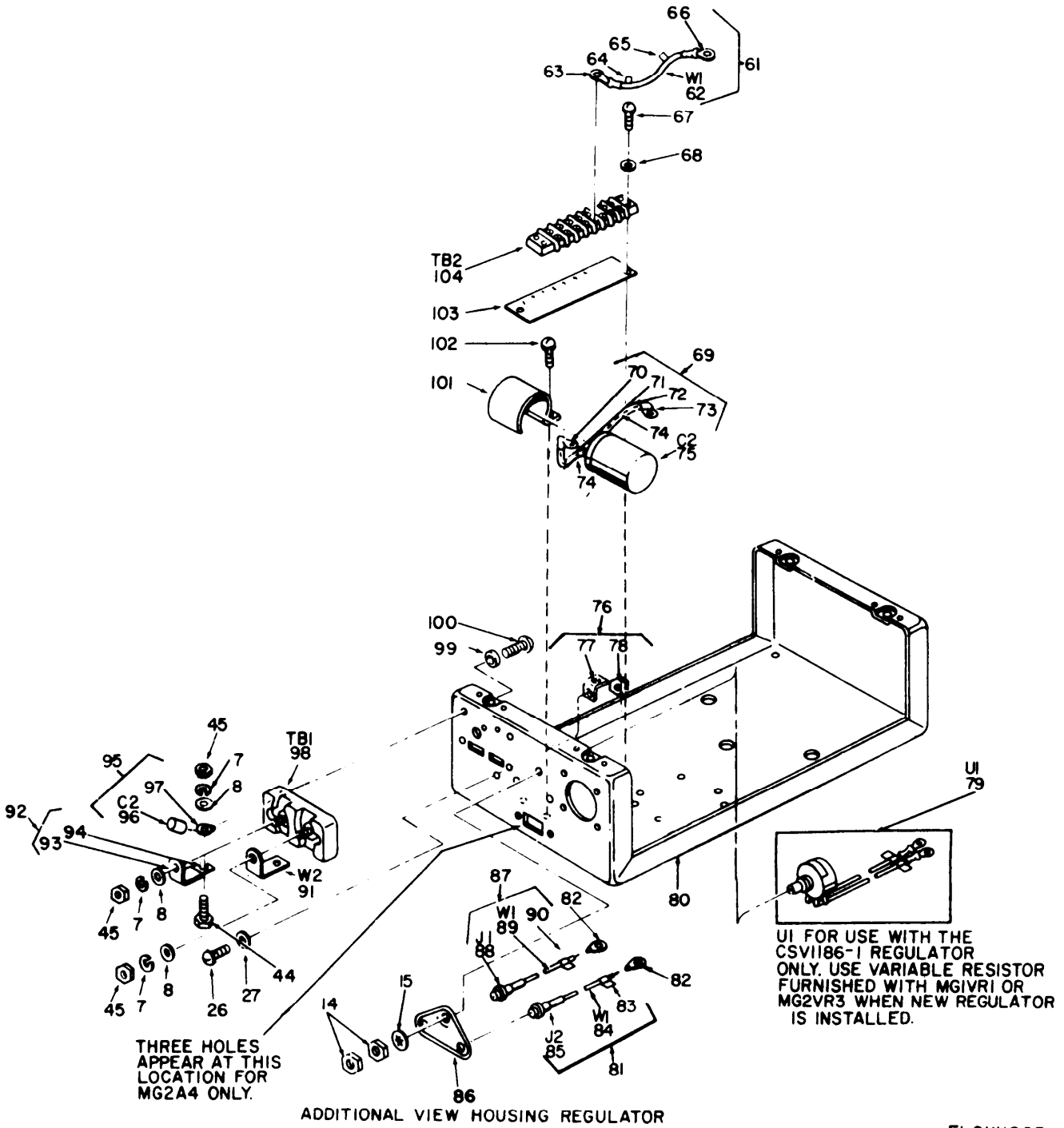


Figure 2. Regulator Section (CSV1186-1, CSV2215-2, CSV2215-3), Regulator Housing Assembly (Sheet 2 of 2)

SECTION II

(1) ILLUSTRATION (A) FIG NO	(2) (B) ITEM NO	(3) SMR CODE	(4) NATIONAL STOCK NUMBER	(5) PART NUMBER	(6) FSCM	(7) DESCRIPTION	(8) QTY INC IN UNIT
						GROUP 01 REGULATOR SECTION (CSV1186-1, CSV2215-2, CSV2215-3)	
2	1	XDHZZ		C4112-2	07639	COVER,REGULATOR USED ON REGULATOR CSV1186-1,CV2215-2, CSV2215-3	EA 1
2	2	XDHZZ		9622-16-00-0242D	02768	STUD,LOCKPIN USED ON REGULATOR CSV1186-1,CSV2215-2, CSV2215-3	EA 3
2	3	XDHZZ		G7455	07639	DECAL,SCHEM DIAGRAM USED ON REGULATOR CSV1186-1, CSV2215-2	EA 1
2	3	XDHZZ		G7569	07639	DECAL,SCHEM DIAGRAM USED ON REGULATOR CSV2215-3	EA 1
2	4	XDHZZ		G6228-1	07639	BASED USED ON REGULATOR CSV1186-1,CSV2215-2,CSV2215-3	EA 1
2	5	PAHHH	2990-00-414-7297	G6228	07639	BASE ASSEMBLY,RGLTR USED ON REGULATOR CSV1186-1, CSV2215-2,CSV2215-3	EA 1
2	6	PAHZZ	5310-00-437-8523	MS35650-32551	96906	NUT,PLAIN,HEXAGON USED ON REGULATOR CSV1186-1,CSV2215-2, CSV2215-3	EA 2
2	7	PAHZZ	5310-00-184-8970	MS35338-101	96906	WASHER,LOCK USED ON REGULATOR CSV1186-1,CSV2215-2, CSV2215-3	EA 5
2	8	PAHZZ	5310-00-177-1156	AN961-416T	88044	WASHER,FLAT ON REGULATOR CSV1186-1,CSV2215-2, CSV2215-3	EA 5
2	9	XDHZZ		K22673	07639	LINK,TERMINAL USED ON REGULATOR CSV1186-1,CSV2215-2, CSV2215-3	EA 1
2	10	XDHZZ		K22672	07639	LINK,TERMINAL USED ON REGULATOR CSV1186-1,CSV2215-2, CSV2215-3	EA 1
2	11	PAHZZ	5305-00-654-8057	A7471-9	07639	SCREW USED ON REGULATOR CSV1186-1,CSV2215-2, CSV2215-3	EA 1
2	12	PAHZZ	5310-00-167-0816	AN960-6	88044	WASHER,FLAT USED ON REGULATOR CSV1186-1,CSV2215-2, CSV2215-3	EA 8
2	13	PAHZZ	5940-00-717-5790	F1C040	07639	TERMINAL BOARD USED ON REGULATOR CSV1186-1,CSV2215-2, CSV2215-3	EA 1
2	14	PAHZZ	5310-00-410-3025	MS35650-305T	96906	NUT,PLAIN,HEXAGON USED ON REGULATOR CSV1186-1,CSV2215-2, CSV2215-3	EA 5
2	15	PAHZZ	5310-00-261-8278	MS35338-100	96906	WASHER,LOCK USED REGULATOR CSV1186-1,CSV2215-2, CSV2215-3	EA 5
2	16	PAHZZ	5310-00-136-1471	AN961-10T	88044	WASHER,FLAT USED ON REGULATOR CSV1186-1,CSV2215-2, CSV2215-3	EA 4
2	17	PAHZZ	5305-00-984-4992	MS35206-232	96906	SCREW,MACHINE USED ON REGULATOR CSV1186-1,CSV2215-2, CSV2215-3	EA 1
2	18	PAHZZ	5310-00-045-4007	MS35338-41T	96906	WASHER,LOCK USED ON REGULATOR CSV1186-1,CSV2215-2, CSV2215-3	EA 5
2	19	XDHZZ		A3736-3	07639	WASHER,FLAT USED ON REGULATOR CSV1186-1,CSV2215-2, CSV2215-3	EA 1
2	20	PAHZZ	5340-00-896-5093	TA557S4	84971	CLAMP,LOOP USED ON REGULATOR CSV1186-1,CSV2215-2, CSV2215-3	EA 1
2	21	PAHZZ	5305-00-984-7361	MS35191-270	96906	SCREW,MACHINE USED ON REGULATOR CSV1186-1,CSV2215-2, CSV2215-3	EA 3
2	22	PAHZZ	5300-984-7363	MS35191-272	96906	SCREW,MACHINE USED ON REGULATOR CSV1186-1,CSV2215-2, CSV2215-3	EA 3
	23	XDHZZ		A7472-8	07639	SCREW,USED ON REGULATOR CSV1186-1,CSV2215-2,CSV2215-3	EA 2
2	24	PAHZZ	5310-00-515-8058	AN960-8	88044	WASHER,FLAT USED ON REGULATOR CSV1186-1,CSV2215-2, CSV2215-3	EA 4
2	25	PAHZZ	5915-00-656-6976	FA3684C	51932	FILTER,RF USED ON REGULATOR CSV1186-1,CSV2215-2, CSV2215-3	EA 1

## SECTION II

(1) ILLUSTRATION (A) FIG NO	(2) (B) ITEM NO	(3) SMR CODE	(4) NATIONAL STOCK NUMBER	(5) PART NUMBER	(6) FSCM	(7) DESCRIPTION USABLE ON CODE	(8) QTY INC IN UNIT
2	26	PAHZZ	5305-00-019-1245	A8044-6	07639	SCREW USED ON REGULATOR CSV1186-1,CSV2215-2,CSV2215-3	EA 4
2	27	PAHZZ	5310-00-167-0834	AN960-10L	88044	WASHER,FLAT USED ON REGULATOR CSV1186-1,CSV2215-2,CSV2215-3	EA 8
2	28	XDHZZ		A7472-10	07639	SCREW USED ON REGULATOR CSV1186-1,CSV2215-2,CSV2215-3	EA 2
2	29	XDHZZ		B6484	07639	BRACKET,ANGLE USED ON REGULATOR CSV1186-1,CSV2215-2,CSV2215-3	EA 1
2	30	XDHZZ		V2393	07639	HOUSING,REGULATOR USED ON REGULATOR CSV1186-1,CSV2215-2	EA 1
2	30	XDHZZ		V2393-3	07639	HOUSING,REGULATOR USED ON REGULATOR CSV2215-3	EA 1
2	31	XDHZZ		A9419-9	07639	SCREW USED ON REGULATOR CSV1186-1,CSV2215-2,CSV2215-3	EA 4
2	32	PAHZZ	5935-00-500-5018	A10312	71768	COVER,CONNECTOR USED ON REGULATOR CSV1186-1,CSV2215-2,CSV2215-3	EA 1
2	33	XDHHH		K30623	07639	METER ASSEMBLY USED ON REGULATOR CSV2215-3	EA 1
2	34	PAHZZ	5310-00-934-9739	MS35649-242	96906	NUT,PLAIN,HEXAGON USED ON REGULATOR CSV2215-3	EA 2
2	35	PAHZZ	6645-00-255-1371	MS17322-10	96906	METER USED ON REGULATOR CSV2215-3	EA 1
2	36	PAHZZ	5310-00-950-1310	MS15795-204	96906	WASHER,FLAT USED ON REGULATOR CSV2215-3	EA 2
2	37	PAHZZ	5310-00-543-2410	MS35338-40	96906	WASHER,LOCK USED ON REGULATOR CSV2215-3	EA 2
2	38	PAHZZ	5305-00-889-2998	MS35206-216	96906	SCREW,MACHINE USED ON REGULATOR CSV2215-3	EA 2
2	39	PAHZZ	5305-00-889-3001	MS35206-231	96906	SCREW,MACHINE USED ON REGULATOR CSV1186-1,CSV2215-2,CSV2215-3	EA 4
2	40	PAHHH	5940-00-682-8604	MS25046-1	96096	COVER ASSEMBLY USED ON REGULATOR CSV1186-1,CSV2215-2,CSV2215-3	EA 1
2	41	PAHZZ	5305-00-897-7125	MS25087-1	96906	SCREW USED ON REGULATOR CSV1186-1,CSV2215-2,CSV2215-3	EA 2
2	42	PAHZZ	5310-00-453-3299	MS35338-42	96906	WASHER,LOCK USED ON REGULATOR CSV1186-1,CSV2215-2,CSV2215-3	EA 2
2	43	XDHZZ		B6115	07639	COVER USED ON REGULATOR CSV1186-1,CSV2215-2,CSV2215-3	EA 1
2	44	XDHZZ		A10337-12	07639	BOLT,MACHINE USED ON REGULATOR CSV1186-1,CSV2215-2,CSV2215-3	EA 2
2	45	PAHZZ	5310-00-282-4777	AN316C4R	88044	NUT,PLAIN,HEXAGON USED ON REGULATOR CSV1186-1,CSV2215-2,CSV2215-3	EA 4
2	46	XDHZZ		A19206	07639	STUD,SHOULDER USED ON REGULATOR CSV1186-1,CSV2215-2,CSV2215-3	EA 1
2	47	XDHZZ		HCL1-0AWG	81705	INSULATION,SLEEVING USED ON REGULATOR CSV1186-1,CSV2215-2,CSV2215-3	IN 7
2	48	XDHHH		K20897	07639	LEAD UNIT,ELEC USED ON REGULATOR CSV1186-1,CSV2215-2,CSV2215-3	EA 1
2	49	XDHZZ		QQN343-9AWG	81349	WIRE,ELECTRICAL USED ON REGULATOR CSV1186-1,CSV2215-2,CSV2215-3	IN 7
2	50	XDHZZ		HCL1-6AWG	81705	INSULATION,SLEEVING USED ON REGULATOR CSV1186-1,CSV2215-2,CSV2215-3	IN 7
2	51	PAHZZ	5940-00-655-3318	33461	00779	TERMINAL,LUG USED ON REGULATOR CSV1186-1,CSV2215-2,CSV2215-3	EA 1
2	52	PAHZZ	5940-00-755-9659	33460	00779	TERMINAL,LUG USED ON REGULATOR CSV1186-1,CSV2215-2,CSV2215-3	EA 1
2	53	XDHHH		A19386	76663	LEAD UNIT,ELEC USED ON REGULATOR CSV1186-1,CSV2215-2,CSV2215-3	EA 1
2	54	XDHZZ		E18AWGBLACK	81349	LEAD,ELECTRICAL USED ON REGULATOR CSV1186-1,CSV2215-2,CSV2215-3	EA 1
2	55	XDHZZ		A5262-A	07639	BAND MARKER,CABLE USED ON REGULATOR CSV1186-1,CSV2215-2,CSV2215-3	EA 1
2	56	XDHZZ		A5262C1	07639	BAND MARKER,CABLE USED REGULATOR CSV1186-1,CSV2215-2,CSV2215-3	EA 1

## SECTION II

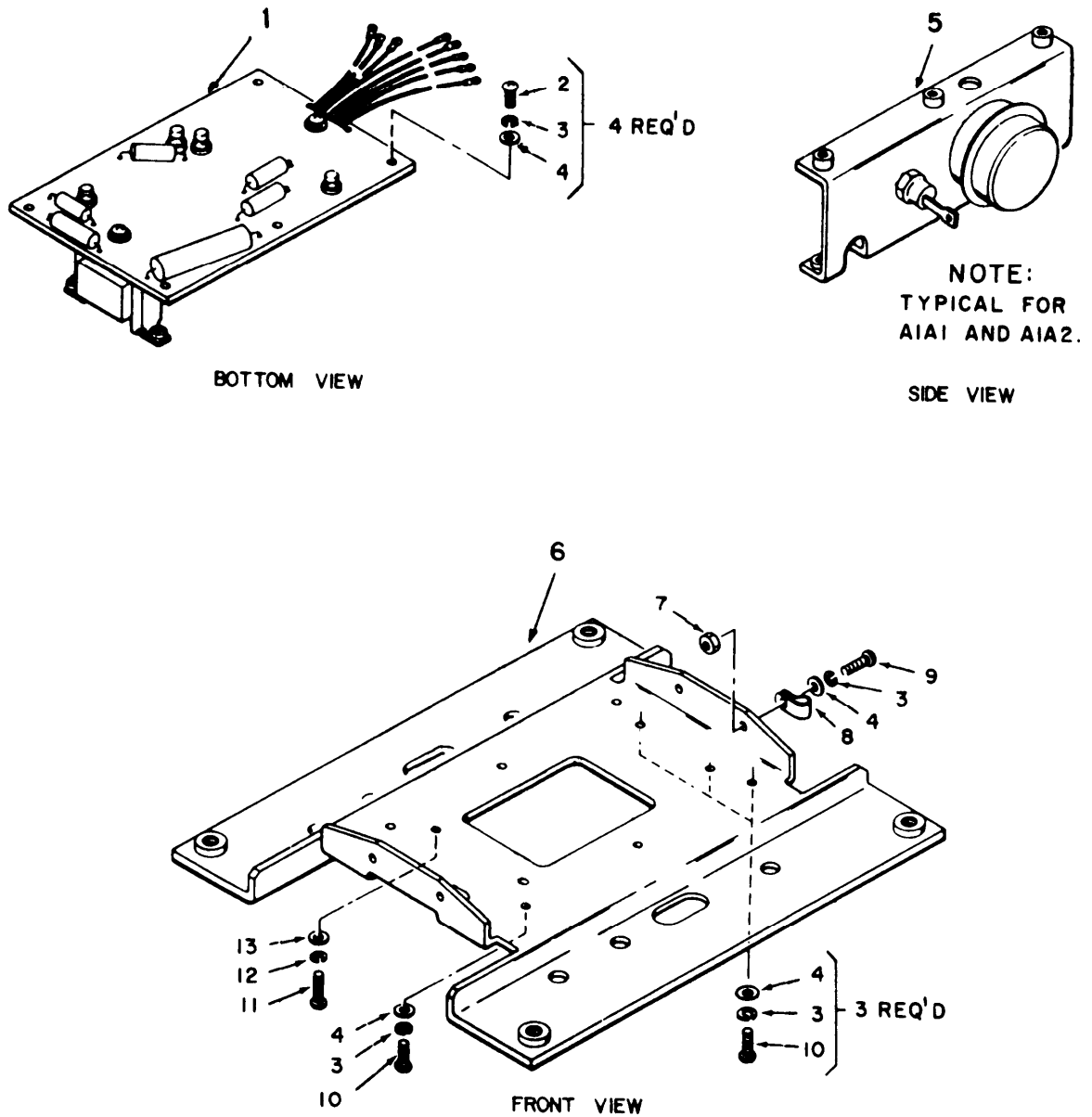
(1) ILLUSTRATION (A) FIG NO	(2) (B) ITEM NO	(3) SMR CODE	(4) NATIONAL STOCK NUMBER	(5) PART NUMBER	(6) FSCM	(6) DESCRIPTION	(7) USABLE ON CODE	(8) QTY INC IN UNIT
2	57	PAHZZ	5940-00-926-9741	YAE18-N	09922	TERMINAL,LUG USED ON REGULATOR CSV1186-1,CSV2215-2, CSV2215-3	EA	3
2	58	PAHZZ	5315-00-221-0465	9822-03-00-0042	02768	PIN,HEADLESS USED ON REGULATOR CSV1186-1,CSV2215-2, CSV2215-3	EA	4
2	59	XDHZZ		A19257	07639	STUD,LOCKPIN USED ON REGULATOR CSV1186-1,CSV2215-2, CSV2215-3	EA	1
2	60	XDHZZ		G7452	07639	DECAL,CONN DIAGRAM USED ON REGULATOR CSV1186-1, CSV2215-2	EA	1
2	60	XDHZZ		G7703	07639	DECAL,CONN DIAGRAM USED ON REGULATOR CSV2215-3	EA	1
2	61	XDHHH		SA10449	07639	LEAD UNIT,ELEC USED ON REGULATOR CSV1186-1,CSV2215-2, CSV2215-3	EA	1
2	62	XDHZZ		E16AWGBLACK	81349	LEAD,ELECTRICAL USED ON REGULATOR CSV1186-1,CSV2215-2, CSV2215-3	IN	7
2	63	PAHZZ	5940-00-813-0698	YAE518N1	09922	TERMINAL,LUG USED REGULATOR CSV1186-1,CSV2215-2, CSV2215-3	EA	1
2	64	XDHZZ		A5262-4	07639	BANDMARKER,CABLE USED ON REGULATOR CSV1186-1,CSV2215-2, CSV2215-3	EA	1
2	65	XDHZZ		A5262C1	07639	BANDMARKER CABLE USED ON REGULATOR CSV1186-1,CSV2215-2 CSV2215-3	EA	1
2	65	PAHZZ	5940-00-926-9741	YAE18-N	09922	TERMINAL,LUG USED REGULATOR CSV1186-1,CSV2215-2, CSV2215-3	EA	1
2	66	PAHZZ	5940-00-926-9741	YAE18-N	09922	TERMINAL,LUG USED ON REGULATOR CSV1186-1,CSV2215-2, CSV2215-3	EA	1
2	67	XDHZZ		A7471-10	07639	SCREW USED ON REGULATOR CSV1186-1,CSV2215-2, CSV2215-3	EA	1
2	68	XDHZZ		A3637-3	07639	WASHER,FLAT USED ON REGULATOR CSV1186-1,CSV2215-2 CV2215-3	EA	1
2	69	PAHHH	5910-00-087-7186	B8507	07639	CAPACITOR ASSEMBLY USED ON REGULATOR CSV1186-1, CSV2215-2,CSV2215-3	EA	1
2	70	XDHZZ		33465	00779	TERMINAL,LUG USED ON REGULATOR CSV1186-1,CSV2215-2, CSV2215-3	EA	1
2	71	XDHZZ		HCl-2AWG-131N	81705	INSULATION,SLEEVING USED ON REGULATOR CSV1186-1,CSV2215-2, CSV2215-3	EA	1
2	72	XDHZZ		HCl-2AWG-5IN	81705	INSULATION,SLEEVING USED ON REGULATOR CSV1186-1,CSV2215-2, CSV2215-3	EA	1
2	73	PAHZZ	5940-00-896-9934	321576	00779	TERMINAL,LUG USED ON REGULATOR CSV1186-1,CSV2215-2, CSV2215-3	EA	1
2	74	XDHZZ		QQW343-9AWG	81349	WIRE,ELECTRICAL USED ON REGULATOR CSV1186-1,CSV2215-2, CSV2215-3	IN	18
2	75	PAHZZ	5910-00-087-7186	C45763	96733	CAPACITOR,FCD,PAPER USED ON REGULATOR CSV1186-1, CSV2215-2,CSV2215-3	EA	1
2	76	XDHHH		SA10446	07639	BRACKET ASSEMBLY USED REGULATOR CSV1186-1,CSV2215-2, CSV2215-3	EA	1
2	77	XDHZZ		A10445	07639	BRACKET,ANGLE USED ON REGULATOR CSV1186-1,CSV2215-2, CSV2215-3	EA	1
2	78	PAHZZ	5310-00-638-6753	CL032-2	46384	NUT,CLINCH USED ON REGULATOR CSV1186-1,CSV2215-2, CSV2215-3	EA	1
2	79	PAHZZ	5905-00-893-5488	K20896	07639	RESISTOR UNIT USED ON REGULATOR CSV1186-1	EA	1
2	80	XDHZZ		D650-2	07639	HOUSING USED ON REGULATOR,CSV1186-1,CSV2215-2	EA	1
2	80	XDHZZ		D650-4	07639	HOUSING USED ON REGULATOR CSV2215-3	EA	1
2	81	PAHHH	5935-00-973-4711	SA10365-2	07639	UNIT,JACK TIP USED ON REGULATOR CSV1186-1,CSV2215-2, CSV2215-3	EA	1

## SECTION II

(1) ILLUSTRATION (A) FIG NO	(2) ITEM NO	(3) SMR CODE	(4) NATIONAL STOCK NUMBER	(5) PART NUMBER	(6) FSCM	DESCRIPTION	(7) USABLE ON CODE	(8) QTY INC IN UNIT
2	82	XDHZZ		YAE18G15	09922	TERMINAL,LUG USED ON REGULATOR CSV1186-1,CSV-2215-2, CSV2215-3	EA	2
2	83	XDHZZ		A5262C1	07639	BANDMARKER,CABLE USED ON REGULATOR CSV186-1CSV2215-2, CSV2215-3	EA	1
2	84	XDHZZ		E20AWGBLACK	81349	LED,ELECTRICAL USED ON REGULATOR CSV1186-1,CSV2215-2, CSV2215-3	IN	5
2	85	PAHZZ	5935-00-683-7651	105-802	74970	JACK TRIP,RED USED ON REGULATOR CSV1186-1,CSV2215-2, CSV2215-3	EA	1
2	86	XDHZZ		B6167	07639	PLATE,INSTRUCTION USED ON REGULATOR CSV-1186-1,CSV2215-2, CSV2215-3	EA	1
2	87	XDHHH		SA10366-2	07639	JACK TIP UNIT USED ON REGULATOR CSV1186-1,CSV2215-2, CSV2215-3	EA	1
2	88	PAHZZ	5935-00-027-8915	105-803	74970	JACK TRIP,BLACK USED ON REGULATOR CSV1186-1,CSV2215-2, CSV2215-3	EA	1
2	89	XDHZZ		E20ANGBLACK	81349	LEAD,ELECTRICAL USED ON REGULATOR CSV1186-1,CV2215-2, CSV2215-3	IN	5
2	90	XDHZZ		A5262GR	07639	BANKMARKER,CABLE USED ON REGULATOR CSV1186-1,CSV2215-2, CSV2215-3	EA	1
2	91	XDHZZ		A10305	07639	BRACKET,ANGLE USED ON REGULATOR CSV1186-1,CSV2215-2, CSV2215-3	EA	1
2	92	XDHHH		SA10526	07639	BRACKET ASSEMBLY USED ON REGULATOR CSV1186-1,CSV2215-2, CSV2215-3	EA	1
2	93	XDHZZ		A10305	07639	BRACKET ANGLE USED REGULATOR CSV1186-1,CSV2215-2, CSV2215-3	EA	1
2	94	XDHZZ		MILR25042TYPE1	81349	INSULATION,ELEC USED ON REGULATOR CSV1186-1,CSV2215-2, CSV2215-3	IN	7
2	95	PAHZZ	5910-00-891-8294	K20893	07639	CAPACITOR ASSEMBLY USED ON REGULATOR CSV1186-1, CSV2215-2,CSV2215-3	EA	1
2	96	PAHZZ	5910-00-891-8294	1MFPDORM10PCT50V	96733	CAPACITOR,FXD,MTLC USED ON REGULATOR CSV1186-1, CSV2215-CSV2215-3	EA	1
2	97	PAHZZ	5940-00-665-5592	4012	00434	TERMINAL,LUG USED ON REGULATOR CSV1186-1,CSV2215-2, CSV2215-3	EA	1
2	98	PAHZZ	5940-00-828-7046	MS25045-1	96906	TERMINAL BOARD USED ON REGULATOR CSV1186-1,CSV2215-2, CSV2215-3	EA	1
2	99	XDHZZ		A10318	07639	WASHER,FLAT USED ON REGULATOR CSV1186-1,CSV2215-2, CSV2215-3	EA	4
2	100	PAHZZ	5305-00-022-8322	A7472-6	07639	SCREW USED ON REGULATOR CSV1186-1,CSV2215-2 CSV2215-3	EA	4
2	101	XDHZZ		A7668	07639	CLAMP,RETAINING USED ON REGULATOR CSV1186-1, CSV2215-2,CSV2215-3	EA	1
2	102	XDHZZ		A7471-6	07639	SCREW USED ON REGULATOR CSV1186-1,CSV2215-2, CSV2215-3	EA	1
2	103	XDHZZ		A10333	07639	PLATE,DESIGNATION USED ON REGULATOR CSV1186-1, CSV2215-2,CSV2215-3	EA	1
2	104	XDHZZ		8-140	71782	TERMINAL BOARD USED ON REGULATOR CSV1186-1,CSV2215-2, CSV2215-3	EA	1





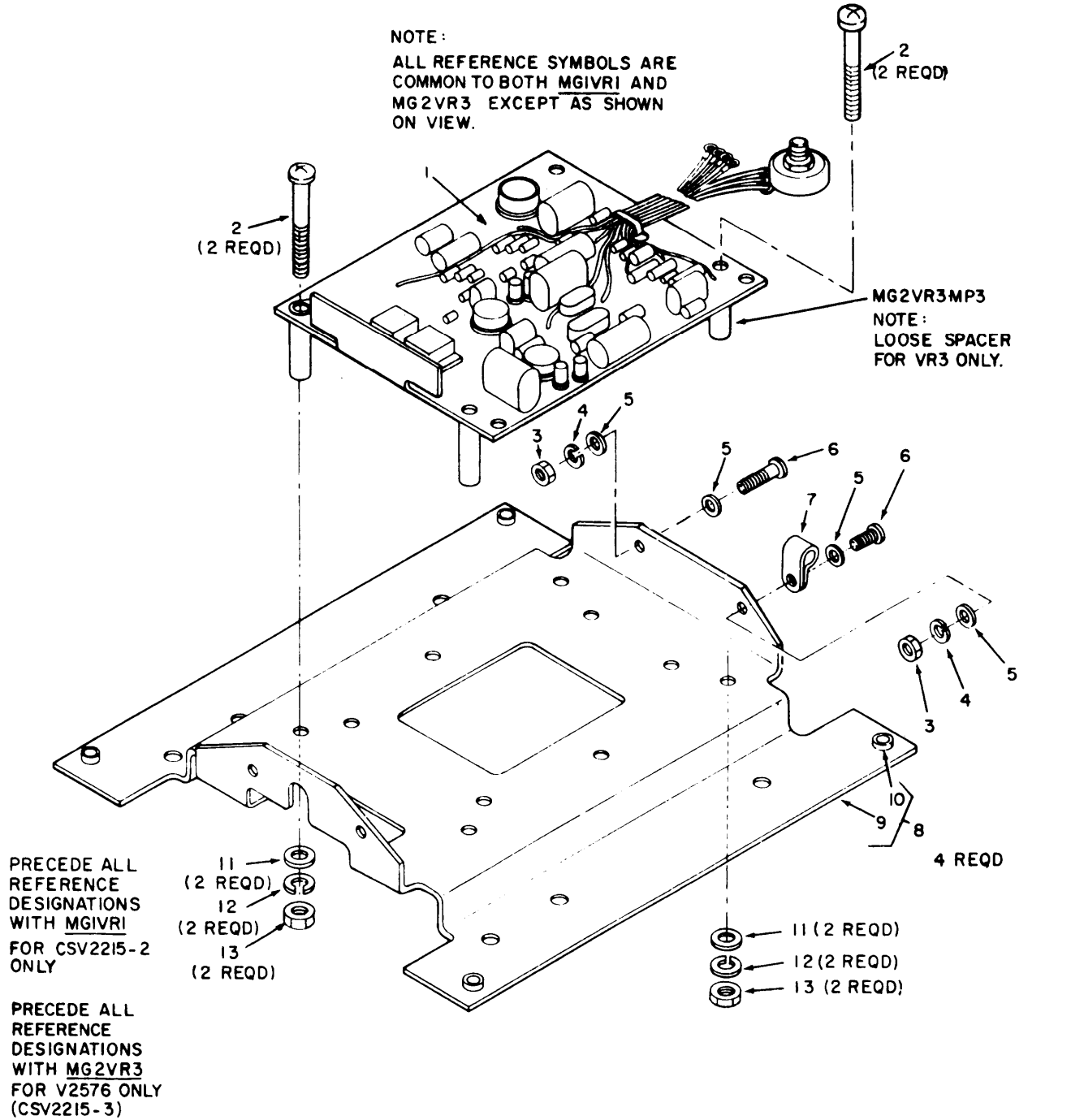


ELOKH004

Figure 3. Regulator Section, Regulator, Voltage and Frequency, CVS1186-1.

SECTION II

(1) ILLUSTRATION (A) FIG NO	(2) (B) ITEM NO	(3) SMR CODE	(4) NATIONAL STOCK NUMBER	(5) PART NUMBER	(6) FSCM	(6) DESCRIPTION	(7) USABLE ON CODE	(8) QTY INC IN UNIT
3	1	XDHZZ		G6225-1	07639	BOARD ASSEMBLY,CKT USED ON REGULATOR CSV1186-1	EA	1
3	2	XDHZZ		AN515-6R7	88044	SCREW USED ON REGULATOR CSV1186-1	EA	1
3	3	XDHZZ		AN935-6	88044	WASHER,LOCK USED ON REGULATOR,CSV1186-1	EA	9
3	4	PAHZZ	5310-00-167-0816	AN960-6	88044	WASHER,FLAT USED ON REGULATOR CSV1186-1	EA	9
3	5	PAHZZ	6125-00-851-0889	G6224-1	07639	BOARD,CIRCUIT USED ON REGULATOR CSV1186-1	EA	1
3	5	XDHZZ		G6224-2	07639	BOARD,CIRCUIT USED ON REGULATOR CSV1186-1	EA	1
3	6	PAHZZ	2990-00-414-7297	G6228	07639	BASE ASSEMBLY USED ON REGULATOR CSV1186-1	EA	1
3	7	XDHZZ		AN340-4	88044	NUT,PLAIN,HEXAGON USED ON REGULATOR CSV1186-1	EA	1
3	8	PAHZZ	5340-00-895-1642	A15667-2	07639	CLAMP,LOOP USED REGULATOR CSV1186-1	EA	1
3	9	XDHZZ		AN515-4R7	88044	SCREW,USED ON REGULATOR CSV1186-1	EA	1
3	10	XDHZZ		AN515-6R6	88044	SCREW USED ON REGULATOR CSV1186-1	EA	4
3	11	XDHZZ		AN515-4R6	88044	SCREW USED ON REGULATOR CSV1186-1	EA	1
3	12	PAHZZ	5310-00-543-2410	AN935-4	88044	WASHER,LOCK USED ON REGULATOR CSV1186-1	EA	1
3	13	PAHZZ	5310-00-950-1310	MS15795-204	96906	WASHER,FLAT USED ON REGULATOR CSV1186-1	EA	1



ELOKH005

Figure 4. Regulator Section, Regulator, Voltage and Frequency, CS2215-2 and CVS2215-3.

SECTION II

(1) ILLUSTRATION (A) FIG NO	(2) (B) ITEM NO	(3) SMR CODE	(4) NATIONAL STOCK NUMBER	(5) PART NUMBER	(6) FSCM	(6) DESCRIPTION	(7) USABLE ON CODE	(8) QTY INC IN UNIT
4	1	XDHHH		V2576	07639	CIRCUIT CARD USED ON REGULATOR CSV2215-3	EA	1
4	1	XDHHH		V2326	07639	CIRCUIT CARD USED ON REGULATOR CSV2215-2	EA	1
4	2	PAHZZ	5305-00-984-6223	MS35206-236	96906	SCREW,MACHINE USE ON REGULATOR CSV2215-2, CSV2215-	EA	4
4	3	PAHZZ	5310-00-934-9739	MS35649-242	96906	NUT,PLAIN,HEXAGON USED ON REGULATOR CSV2215-2, CSV2215-3	EA	2
4	4	PAHZZ	5310-00-543-2410	MS35338-40	96906	WASHER,LOCK USED ON REGULATOR CSV2215-2,CSV2215-3	EA	2
4	5	PAHZZ	5310-00-950-1310	MS15795-204	96906	WASHER,FLAT USED ON REGULATOR CSV2215-2,CSV2215-3	EA	4
4	6	PAHZZ	5305-00-889-2998	MS35206-216	96906	SCREW,MACHINE USED ON REGULATOR CSV2215-2,CSV2215-3	EA	2
4	7	PAHZZ	5340-00-895-1642	NPC3	81074	CLAMP LOOP USED ON REGULATOR CSV2215-2,CSV2215-3	EA	1
4	8	PAHHH	2990-00-414-7297	G6228	77260	BASE ASSEMBLY USED ON REGULATOR CSV225-2,CSV2215-3	EA	1
4	9	XDHZZ		G6219	07639	BASE USED ON REGULATOR CSV2215-2,CSV2215-3	EA	1
4	10	PAHZZ	5310-00-638-6753	CL032-2	46384	NUT,CLINCH USED ON REGULATOR CSV2215-2,CSV2215-3	EA	4
4	11	PAHZZ	5310-00-167-0816	AN960-6	88044	WASHER,FLAT USED ON REGULATOR CSV2215-2,CSV2215-3	EA	4
4	12	PAHZZ	5310-00-045-4007	MS55338-41	96906	WASHER,LOCK USED ON REGULATOR CSV2215-2,CSV2215-3	EA	4
4	13	PAHZZ	5310-00-934-9747	MS35649-262	96906	NUT,PLAIN,HEXAGON USED ON REGULATOR CSV2215-2, CSV2215-3	EA	4

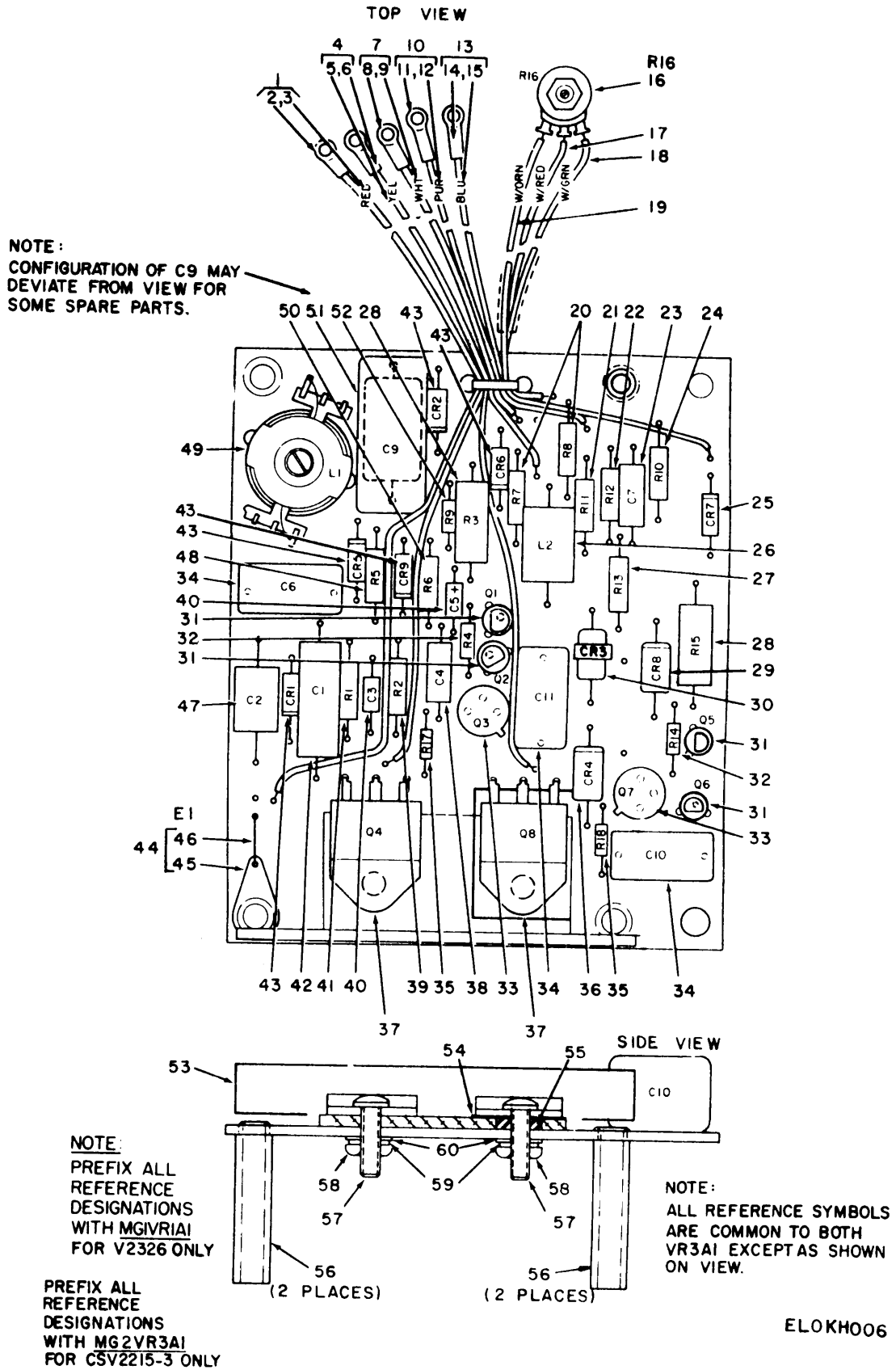


Figure 5. Regulator Section, Regulator, Voltage and Frequency CVS2215-3 and Circuit Card Assembly V2326.

SECTION II

(1) ILLUSTRATION (A) FIG NO	(2) (B) ITEM NO	(3) SMR CODE	(4) NATIONAL STOCK NUMBER	(5) PART NUMBER	(6) FSCM	DESCRIPTION	USABLE ON CODE	(7) U/M	(8) QTY INC IN UNIT
5	1	XDHHH		K29751	07639	LEAD UNIT,ELEC USED ON REGULATOR CSV22152, CSV2215-3		EA	1
5	2	PAHZZ	5940-00-577-3807	YAE22G13	09922	TERMINAL,LUG USED ON REGULATOR CSV2215-2, CSV2215-3		EA	1
5	3	XDHZZ		E20AWGRED	81349	LEAD,ELECTRICAL USED ON REGULATOR CSV2215-2, CSV2215-3		EA	1
5	4	XDHHH		K29749	07639	LEAD UNIT,ELEC USED ON REGULATOR CSV2215-2, CSV2215-3		EA	1
5	5	XDHZZ		E20AWGYELLOW	81349	LEAD,ELECTRICAL USED ON REGULATOR CSV2215-2,CSV2215-3		EA	1
5	6	PAHZZ	5940-00-577-3807	YAE22G13	09922	TERMINAL,LUG USED ON REGULATOR CSV2215-2,CSV2215-3		EA	1
5	7	XDHHH		K29750	07639	LEAD UNIT,ELEC USED ON REGULATOR CSV2215-2,CSV2215-3		EA	1
5	8	PAHZZ	5940-00-577-3807	YAE22G13	09922	TERMINAL,LUG USED ON REGULATOR CSV2215-2,CSV2215-3		EA	1
5	9	XDHZZ		E20AWGWHITE	81349	LEAD,ELECTRICAL USED ON REGULATOR CSV225-2,CSV2215-3		EA	1
5	10	XDHHH		K29748	07639	LEAD UNIT,ELEC USED ON REGULATOR CSV2215-2,CSV2215-3		EA	1
5	11	PAHZZ	5940-00-577-3807	YAE22G13	09922	TERMINAL,LUG USED ON REGULATOR CSV2215-2,CSV2215-3		EA	1
5	12	XDHZZ		E22AWGPURPLE	81349	LEAD,ELECTRICAL USED ON REGULATOR CSV2215-2, CSV2215-3		EA	1
5	13	XDHHH		K29747	07639	LEAD UNIT,ELEC USED ON REGULATOR CSV2215-2,CSV2215-3		EA	1
5	14	PAHZZ	5940-00-577-3807	YAE22G13	09922	TERMINAL,LUG USED ON REGULATOR CSV2215-2,CSV2215-3		EA	1
5	15	XDHZZ		E22AWGBLUE	81349	LEAD,ELECTRICAL USED ON REGULATOR CSV2215-2,CSV225-3		EA	1
5	16	PAHZZ	5905-00-405-1339	551-10K0HMSFORM 20PCT2W	71450	RESISTOR,VARIABLE USED ON REGULATOR CSV2215-2, CSV2215-3		EA	1
5	17	XDHZZ		E22AWGWHITEANDRED	81349	LEAD,ELECTRICAL USED ON REGULATOR CSV2215-2,CSV2215-3		EA	1
5	18	XDHZZ		E22AWGWHITEAND GREEN	81349	LEAD,ELECTRICAL USED ON REGULATOR CSV2215-2, CSV2215-3		EA	1
5	19	XDHZZ		E22AWGWHITEAND ORANGE	81349	LEAD,ELECTRICAL USED REGULATOR CSV2215-2,CSV2215-3		EA	1
5	20	XDHZZ		RNR60332KOHMSPOR M1PCT1-8W	19701	RESISTOR,FIXED,FILM USED ON REGULATOR CSV2215-2, CSV225-3		EA	2
5	21	XDHZZ		RNR6015KOHMSFORM 1PCT1-8W	19701	RESISTOR,FIXED,FILM USED ON REGULATOR CSV2215-2, CSV2215-3		EA	1
5	22	XDHZZ		RNR60301KOHMSFORM 1PCT1-8W	19701	RESISTOR,FIXED,FILM USED ON REGULATOR CSV225-2, CSV2215-3		EA	1
5	23	XDHZZ		150D56MFDPPORM10 PCT6VDC	56289	CAPACITOR,FIXED USED ON REGULATOR CSV2215-2, CSV2215-3		EA	1
5	24	XDHZZ		RNR60121KOHMSFORM 1PCT18W	19701	RESISTOR,FIXED,FILM USED ON REGULATOR CSV2215-2, CSV2215-3		EA	1
5	25	XDHZZ		1N4705	12954	SEMICONDUCTOR,DIODE USED ON REGULATOR CSV2215-2, CSV2215-3		EA	1
5	26	PAHZZ	5950-00-172-4947	F13072-1	07639	CHOCK,RF USED ON REGULATOR CSV2215-2,CSV2215-3		EA	1
5	27	XDHZZ		RNR60261KOHMSFORM 1PCT1-8W	19701	RESISTOR,FIXED,FILM USED ON REGULATOR CSV2215-2, CSV2215-3		EA	1
5	28	XDHZZ		BWH10000HMSFORM5 PCT1-2W	75042	RESISTOR,FIXED USED ON REGULATOR CSV2215-,CSV2215-3		EA	2
5	29	PAHZZ	5961-00-190-5937	3E1	12060	SEMICONDUCTOR,DIODE USED ON REGULATOR CSV2215-2, CSV2215-3		EA	1
5	30	PAHZZ	5961-00-222-1541	MR751	04713	SEMICONDUCTOR,DIODE USED ON REGULATOR CSV2215-2, CSV2215-3		EA	1

SECTION II

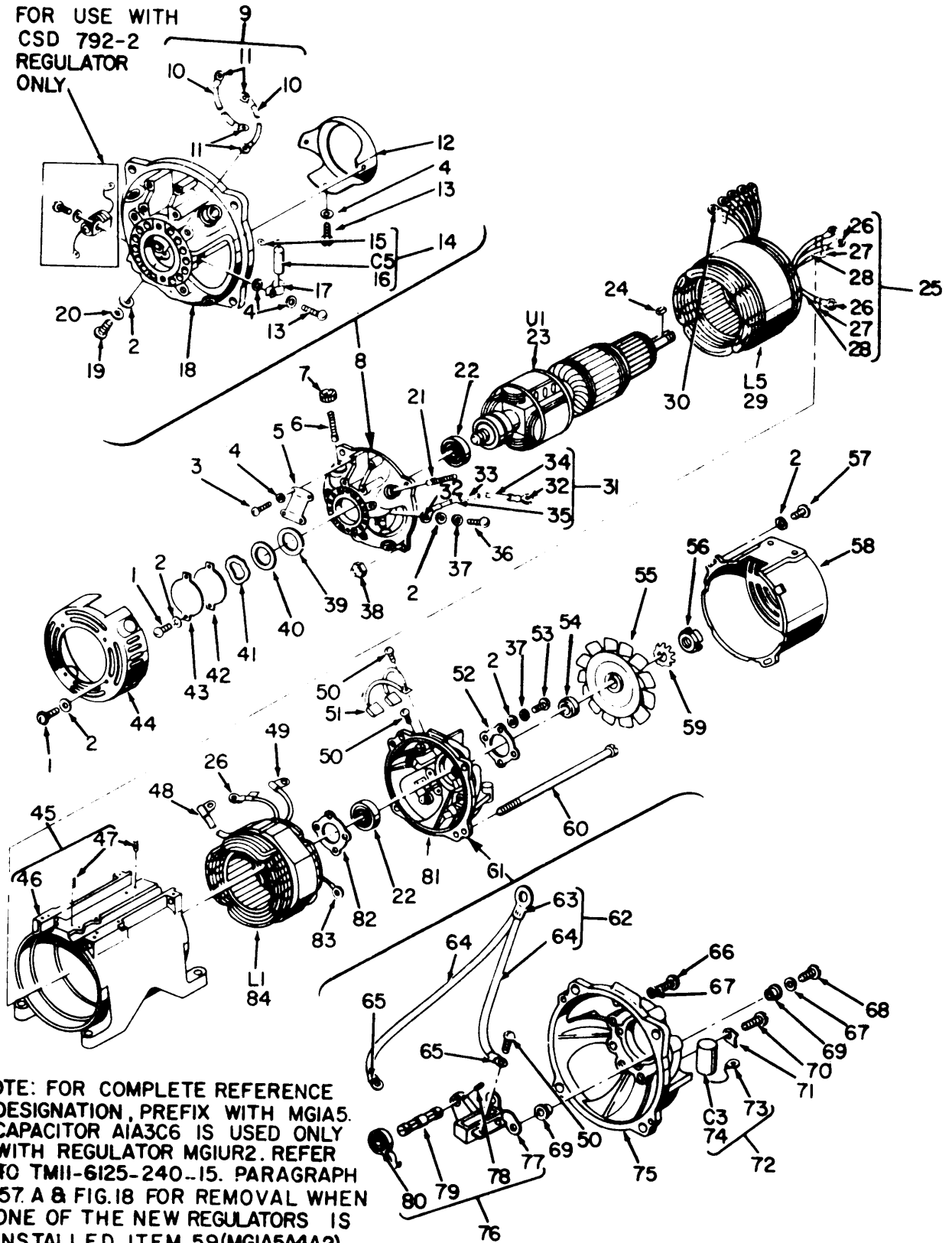
(1) ILLUSTRATION (A) FIG NO	(2) ITEM NO	(3) SMR CODE	(4) NATIONAL STOCK NUMBER	(5) PART NUMBER	(6) FSCM	(7) DESCRIPTION USABLE ON CODE	(8) QTY INC IN UNIT
5	31	PAHZZ	5961-00-137-4400	33D4387	03508	TRANSISTOR,SILICON USED ON REGULATOR CSV2215-2, CSV2215-3	EA 4
5	32	XDHZZ		RC07GF240HMSFORM 5PCT1-4W	12400	RESISTOR,FXD,CMPNS USED ON REGULATOR CSV2215-2, CSV2215-3	EA 2
5	33	PAHZZ	5961-00-891-8297	36885	02735	TRANSISTOR,SILICON USED ON REGULATOR CSV2215-2, CSV2215-3	EA 2
5	34	XDHZZ		FM033MFDPOFORM10PCT 100VDC	19396	CAPACITOR,FIXED USED ON REGULATOR CSV2215-2, CSV2215-3	EA 3
5	35	XDHZZ		RC07GF1000HMSFORM 5PCT1-4W	12400	RESISTOR,FXD,CMPNS USED ON REGULATOR CSV2215-2, CSV2215-3	EA 2
5	36	XDHZZ		UT389	12969	SEMICONDUCTOR,DIODE USED ON REGULATOR CSV2215-2, CSV2215-3	EA 1
5	37	XDHZZ		EP174	01295	TRANSISTOR,SILICON USED ON REGULATOR CSV2215-2, CSV2215-3	EA 2
5	38	XDHZZ		150D22MFDPOFORM10P CT15VDC	56289	CAPACITOR,FIXED USED ON REGULATOR CSV2215-2, CSV2215-3	EA 1
5	39	XDHZZ		RNR6013KOHMSFORM 1PCT1-8W	19701	RESISTOR,FIXED,FILM USED ON REGULATOR CSV2215-2, CSV2215-3	EA 1
5	40	XDHZZ		150D1MFDPOFORM10PC T35VDC	56289	CAPACITOR,FIXED USED ON REGULATOR CSV2215-2, CSV2215-3	EA 2
5	41	XDHZZ		RNR60681KOHMSFORM 1PCT1-8W	19701	RESISTOR,FIXED,FILM USED ON REGULATOR CSV2215-2, CSV2215-3	EA 1
5	42	PAHZZ	5910-00-137-4411	625B1E153J	14752	CAPACITOR,FXD,PLSTC USED ON REGULATOR CSV2215-2, CSV2215-3	EA 1
5	43	PAHZZ	5961-00-087-6047	1N645	11711	SEMICONDUCTOR,DIODE USED ON REGULATOR CSV2215-2, CSV2215-3	EA 5
5	44	XDHHH		K29773	07639	LEAD UNIT,ELEC USED ON REGULATOR CSV2215-2, CSV2215-3	EA 1
5	45	PAHZZ	6145-00-669-6564	QQW343-TYPES22AWG	81348	WIRE,ELECTRICAL USED ON REGULATOR CSV2215-2, CSV2215-3	EA 1
5	46	PAHZZ	5940-00-867-7806	4007	77147	TERMINAL,LUG USED ON REGULATOR CSV2215-2, CSV2215-3	EA 1
5	47	PAHZZ	5910-00-137-4401	625B1B54J	14752	CAPACITOR,FXD,PLSTC USED ON REGULATOR CSV2215-2, CSV2215-3	EA 1
5	48	XDHZZ		RNR60121KOHMSFORM 1PCT1-8W	19701	RESISTOR,FIXED,FILM USED ON REGULATOR CSV2215-2, CSV2215-3	EA 1
5	49	XDHZZ		P12983	07639	REACTOR USED ON REGULATOR CSV2215-2,CSV2215-3	EA 1
5	50	XDHZZ		RNR60221KOHMSFORM 1PCT1-8W	19701	RESISTOR,FIXED,FILM USED ON REGULATOR CSV2215-2, CSV2215-3	EA 1
5	51	XDHZZ		210B1B105K	14752	CAPACITOR,FIXED USED ON REGULATOR CSV2215-2,CSV2215-3	EA 1
5	52	XDHZZ		RC07GF15KOHMSFORM 5PCT1-4W	12400	RESISTOR,FXD,CMPNS USED ON REGULATOR CSV2215-2, CSV2215-3	EA 1
5	53	XDHZZ		F13168	07639	HEAT SINK USED ON REGULATOR CSV2215-2,CSV2215-3	EA 1
5	54	XDHZZ		K29764	07639	INSULATOR,XSTR USED ON REGULATOR CSV2215-2, CSV2215-3	EA 1
5	55	XDHZZ		A20204-8	07639	INSULATOR,BUSHING USED ON REGULATOR CSV2215-2, CSV2215-3	EA 1
5	56	XDHZZ		B8900-60	07639	SPACER,SLEEVE USED ON REGULATOR CSV2215-2,CSV2215-3	EA 4
5	57	PAHZZ	5305-00-889-2997	MS35206-215	96906	SCREW,MACHINE USED ON REGULATOR CSV2215-2, CSV2215-3	EA 2



SECTION II

(1)	(2)	(3)	(4)	(5)	(6)	(7)	(8)	
ILLUSTRATION								
(A)	(B)	NATIONAL			DESCRIPTION		QTY	
FIG	ITEM	SMR	STOCK	PART			INC	
NO	NO	CODE	NUMBER	NUMBER	FSCM	USABLE ON CODE	U/M	
							UNIT	
5	58	PAHZZ	5310-00-934-9739	MS35649-242	96906	NUT,PLAIN,HEXAGON USED ON REGULATOR CSV2215-2, CSV2215-3	EA	2
5	59	PAHZZ	5310-00-543-2410	MS35338-40	96906	WASHER,LOCK USED ON REGULATOR CSV2215-2,CSV2215-3	EA	2
5	60	PAHZZ	5310-00-950-1310	MS15795-204	96906	WASHER,FLAT USED ON REGULATOR CSV2215-2,CSV2215-J	EA	2

FOR USE WITH  
CSD 792-2  
REGULATOR  
ONLY



NOTE: FOR COMPLETE REFERENCE DESIGNATION, PREFIX WITH MGIA5. CAPACITOR AIA3C6 IS USED ONLY WITH REGULATOR MGIUR2. REFER TO TM11-6125-240-15, PARAGRAPH 57 A & FIG.18 FOR REMOVAL WHEN ONE OF THE NEW REGULATORS IS INSTALLED. ITEM 59(MGIA5A4A2) ENDBELL ASSEMBLY. ITEM 80(A4) LESS THE LEAD UNIT ITEM 60 (A4A1)

ELOKH007

Figure 6. Generator Section (Rotating Section MGE23-400, MGE23-400A, MGE23-500A).

SECTION II

(1) ILLUSTRATION (A) FIG NO	(2) (B) ITEM NO	(3) SMR CODE	(4) NATIONAL STOCK NUMBER	(5) PART NUMBER	(6) FSCM	DESCRIPTION	USABLE ON CODE	(7) U/M	(8) QTY INC IN UNIT
						GROUP 02 GENERATOR SECTION (MGE23-400, MGE23-400A, MGE23-500A)			
6	1	XDHZZ		A7472-8	07639	SCREW,MACHINE USED ON ROTATING SECTION MGE23-400, MGE23-400A,MGE23-500A		EA	6
6	2	PAHZZ	5310-00-515-8058	AN960-8	88044	WASHER USED ON ROTATING SECTION MGE23-400,MGE23-400A, MGE23-500A		EA	15
6	3	XDHZZ		A7471-5	07639	SCREW,MACHINE USED ON ROTATING SECTION MGE23-400, MGE23-400A,MGE23-500A		EA	4
6	4	PAHZZ	5310-00-167-0816	AN960-6	88044	WASHER USED ROTATING SECTION MGE23-400,MGE23-400,MGE23-400A, MGE23-5004		EA	9
6	5	XDHZZ		A10410	07639	COVER,DUCT USED ON ROTATING SECTION MGE23-400, MGE23-400A,MGE23-500A		EA	1
6	6	XDHZZ		K22276	07639	BRUSH,AC USED ON ROTATING SECTION MGE23-400, MGE23-400A,MGE23-500A		EA	2
6	7	PAHZZ	6125-00-970-5301	S1810	76473	CAP,ELECTRICAL USED ON ROTATING SECTION MGE23-400, MGE23-400A,MGE23-500A		EA	4
6	8	XDHZZ		SC4396-2	07639	ENDBELL USED ON ROTATING SECTION MGE23-400		EA	1
6	8	XDHZZ		SC4396-3	07639	ENDBELL USED ON ROTATING SECTION MGE23-400A MGE23-500A		EA	1
6	9	XDHZZ		K24498	07639	LEAD UNIT,ELEC USED ON ROTATING SECTION MGE23-400, MGE23-400A,MGE23-500A		EA	2
6	10	XDHZZ		E18AWGBLACK	81349	LEAD,ELECTRICAL USED ON ROTATING SECTION MGE23-400, MGE23-400A,MGE23-500A		IN	5
6	11	PAHZZ	5940-00-926-9741	YAE18N	09922	TERMINAL,LUG USED ON ROTATING SECTION MGE23-400, MGE23-400A,MGE-500A		EA	4
6	12	XDHZZ		B6150	07639	DUCT,VENT USED ON ROTATING SECTION MGE23-400, MGE23-400A,MGE23-500A		EA	1
6	13	PAHZZ	5305-00-558-8735	A7471-6	07639	SCREW,MACHINE USED ON ROTATING SECTION MGE23-400, MGE23-400A,MGE23-500A		EA	3
6	14	XDHZZ		SA10619	07639	CAPACITOR UNIT USED ON ROTATING SECTION MGE23-400, MGE23-400A,MGE23-500A		EA	2
6	15	PAHZZ	5940-00-552-2023	34109	00779	TERMINAL,LUG USED ON ROTATING SECTION MGE-23-400, MGE-23-400A,MGE23-500A		EA	2
6	16	PAHZZ	5910-00-688-6221	CP08A3K8103K3	81349	CAPACITOR USED ON ROTATING SECTION MGE23-400, MGE-23-400A,MGE23-500A		EA	2
6	17	PAHZZ	5340-00-896-5093	TA557S4	84971	CLAMP,LOOP USED ON ROTATING SECTION MGE23-400, MGE23-400A,MGE23-500A		EA	2
6	18	XDHZZ		SB6487	07639	ENDBELL USED ON ROTATING SECTION MGE23-400, MGE23-400A,MGE23-500A		EA	1
6	19	XDHZZ		AN508-8-4	88044	SCREW MACHINE USED ON ROTATING SECTION MGE23-400, MGE23-400A,MGE23-500A		EA	2
6	20	PAHZZ	5310-00-559-0070	MS35333-38	96906	WASHER,LOCK USED ON ROTATING SECTION MGE23-400, MGE23-400A,MGE23-500A		EA	2
6	21	XDFZZ		K22278	07639	BRUSH,AC USED ON ROTATING SECTION MGE23-400, MGE23-400A,MGE23-500A		EA	2
6	22	PAHZZ	3110-00-689-7392	A15884-8	07639	BEARING USED ON ROTATING SECTION MGE23-400, MGE23-400A,MGE23-500A		EA	2
6	23	PAHZZ	6125-00-683-0505	SC4107	07639	ARMATURE USED ON ROTATING SECTION MGE23-400, MGE23-400A,MGE23-500A		EA	1

SECTION II

(1) ILLUSTRATION (A) FIG NO	(2) ITEM NO	(3) SMR CODE	(4) NATIONAL STOCK NUMBER	(5) PART NUMBER	(6) FSCM	DESCRIPTION	(7) USABLE ON CODE	(8) QTY INC IN UNIT
6	24	PAHZZ	5315-00-691-0032	A10390	07639	KEY,MACHINE USED ON ROTATING SECTION MGE23-400, MGE23-400A,MGE23-500A	EA	1
6	25	XDHHH		K204647	07639	LEAD UNIT,ELECTRICAL USED ON ROTATING SECTION MGE23-400,MGE23-400A,MGE23-500A	EA	1
6	26	PAHZZ	5940-00-813-0698	YAE18G43	09922	TERMINAL,LUG USED ON ROTATING SECTION MGE23-400, MGE23-400A,MGE23-500A	EA	2
6	27	XDHZZ		A5262-6	07639	BAND MARKER USED ON ROTATING SECTION MGE23-400, MGE23-400A,MGE23-500A	EA	1
6	28	XDHZZ		E18AWGBLACK	81349	LEAD,ELECTRICAL USED ON ROTATING SECTION MGE23-400, MGE23-400A,MGE23-500A	IN	7
6	29	XDHZZ		D704	07639	STATROR AC USED ON ROTATING SECTION MGE23-400, MGE23-400A,MGE23-500A	EA	1
6	30		5940-00-926-9741	YAE18-N	09922	TERMINAL,LUG USED ON ROTATING SECTION MGE23-400, MGE23-400A,MGE23-500A	EA	6
6	31	XDHHH		SA10507	07639	LEAD UNIT,ELECTRICAL USED ON ROTATING SECTION MGE23-400,MGE23-400A,MGE23-500A	EA	1
6	32	PAHZZ	5940-00-926-9741	YAE18-N	09922	TERMINAL,LUG USED ON ROTATING SECTION MGE23-400,MGE23-400A,MGE23-500A	EA	2
6	33	XDHZZ		HCL-8AWG	81705	INSULATION,SLEEVING USED ON ROTATING SECTION MGE23-400,MGE23-400A,MGE23-500A	IN	2
6	34	XDHZZ		E18AWGBLACK	81349	LEAD,ELECTRICAL USED ON ROTATING SECTION MGE23-400, MGE23-400A,MGE23-500A	EA	8
6	35	XDHZZ		A5262B2	07639	BAND,MARKING USED ON ROTATING SECTION MGE23-400, MGE23-400A,MGE23-500A	EA	1
6	36	PAHZZ	5305-00-637-1124	AN508-8-6	88044	SCREW,MACHINE USED ON ROTATING SECTION MGE23-400, MGE23-400A,MGE23-500A	EA	1
6	37	PAHZZ	5310-00-045-3299	MS35338-42	96906	WASHER,LOCK USED ON ROTATING SECTION MGE23-400, MGE23-400A,MGE23-500A	EA	5
6	38	XDHZZ		MS20365-428C	96906	NUT USED ON ROTATING SECTION MGE23-400,MGE23-400A, MGE23-500A	EA	4
6	39	XDHZZ		1562-5	07639	WASHER,SHIM USED ON ROTATING SECTION MGE23-400, MGE23-400A,MGE23-500A	EA	1
6	40	XDHZZ		1562-1	07639	WASHER,SHIM USED ON ROTATING SECTION MGE23-400, MGE23-400A,MGE23-500A	EA	1
6	41	PAHZZ	5360-00-224-9633	N1351-015	27745	SPRING,BALL BEARING USED ON ROTATING SECTION MGE23-400,MAGE23-400A,MGE23-500A	EA	1
6	42	XDHZZ		A15118	07639	PLATE,BACKING USED ON ROTATING SECTION MGE23-00, MGE23-400A,MGE23-500A	EA	1
6	43	PAHZZ	6125-00-895-1015	A15110	07639	PLATE,BEARING USED ON ROTATING SECTION MGE23-400, MGE23-500A,MGE23-500A	EA	1
6	44	PAHZZ	6125-00-583-9517	C4108	07639	COVER USED ON ROTATING SECTION MGE23-400,MGE23-400, MGE23-500A	EA	1
6	45	PAHHH	6125-00-988-7123	D651	07639	STATOR USED ON ROTATING SECTION MGE23-400,MGE23-400A, MGE23-500A	EA	1
6	46	PAHZZ	6150-00-226-9978	D225-4	07639	HOUSING USED ON ROTATING SECTION MGE23-400,MGE23-400A, MGE23-500A	EA	1
6	47	PAHZZ	5305-00-980-9565	1522-5	07639	SETSCREW USED ON ROTATING SECTION MGE23-400, MGE23-400A,MGE23-500A	EA	2
6	48	XDHZZ		36272	00779	TERMINAL,LUG USED ON ROTATING MGE23-400, MGE23-400A,MGE23-500A	EA	1
6	49	PAHZZ	5940-00-896-9934	321576	00779	TERMINAL,LUG USED ON ROTATING SECTION MGE23-400, MGE23-400A,MGE23-500A	EA	1

## SECTION II

(1) ILLUSTRATION (A) FIG NO	(2) (B) ITEM NO	(3) SMR CODE	(4) NATIONAL STOCK NUMBER	(5) PART NUMBER	(6) FSCM	DESCRIPTION	(7) USABLE ON CODE	(8) QTY INC IN UNIT
6	50	XDHZZ		A8217-6	07639	SCREW,MACHINE USED ON ROTATING SECTION MGE23-400, MGE23-400A,MGE23-500A	EA	8
6	51	PAHZZ	5977-00-970-5278	K30093	07639	BRUSH,ELECTRICAL USED ON ROTATING SECTION MGE23-400, MGE23-400A,MGE23-500A	EA	4
6	52	PAHZZ	6125-00-895-1016	A15128	07639	PLATE,BEARING ELEC USED ON ROTATING SECTION MGE23-400, MG23-400A,MGE23-500A	EA	1
6	53	PAHZZ	5305-00-984-6196	MS35206-248	96906	SCREW,MACHINE USED ON ROTATING SECTION MGE23-400, MGE23-400A,MGE2300-500A	EA	4
6	54	XDHZZ		A10389	07639	SPACER,SLEEVE USED ON ROTATING SECTION MGE23-400, MGE23-400A,MGE23-500A	EA	1
6	55	PAHZZ	6125-00-822-4447	P9445	07639	FAN,ELECTRICAL USED ON ROTATING SECTION MGE23-400, MGE23-400A,MGE23-500A	EA	1
6	56	PAHZZ	5310-00-185-6400	A10385	07639	NUT,PLAIN,ROUND USED ON ROTATING SECTION MGE23-400, MGE23-400A,MGE23-500A	EA	1
6	57	XDHZZ		A7472-10	07639	SCREW,MACHINE USED ON ROTATING SECTION MGE23-400, MGE23-400A,MGE23-500A	EA	2
6	58	PAHZZ	6125-00-657-2041	C4397	07639	COVER,FAN USED ON ROTATING SECTION MGE23-400, MGE23-400A,MGE23-500A	EA	1
6	59	PAHZZ	5310-00-045-3810	A10384	07639	WASHER,KEY USED ON ROTATING SECTION MGE23-400, MGE23-400A,MGE23-500A	EA	1
6	60	PAHZZ	5305-00-579-3014	A10440-1	07639	SCREW,MACHINE USED ON ROTATING SECTION MGE23-400, MGE23-400A,MGE23-500A	EA	4
6	61	PAHZZ	6125-00-056-8743	SC4398	07639	ENDBELL USED ON ROTATING SECTION MGE23-400, MGE23-400A,MGE23-500A	EA	1
6	62	XDHHH		SB6178	07639	LEAD UNIT,ELEC USED ON ROTATING SECTION MGE23-400, MGE23-400,MGE23-500A	EA	1
6	63	XDHZZ		33465	00779	TERMINAL,LUG USED ON ROTATING SECTION MGE23-400, MGE23-400A,MGE23-500A	EA	1
6	64	XDHZZ		QQW349-9AWG	81349	WIRE,ELECTRICAL USED ON ROTATING SECTION MGE23-400, MGE23-400A,MGE23-500A	IN	14
6	65	PAHZZ	5940-00-114-1305	YAEV8CL	09922	TERMINAL,LUG USED ROTATING SECTION MGE23-400, MGE23-400A,MGE23-500A	EA	2
6	66	PAHZZ	5305-00-018-7180	A8044-12	07639	SCREW,MACHINE USED ON ROTATING SECTION MGE23-400, MGE23-400A,MGE23-500A	EA	4
6	67	PAHZZ	5310-00-167-0834	AN960-10L	88044	WASHER,FLAT USED ON ROTATING MGE23-400, MGE23-400A,MGE23-500A	EA	8
6	68	XDHZZ		A8044-14	07639	SCREW,MACHINE USED ON ROTATING SECTION MGE23-400, MGE23-400A,MGE23-500A	EA	4
6	69	PAHZZ	3120-00-540-7087	A10395	07639	BUSHING USED ON ROTATING SECTION MGE23-400,MGE400A, MGE23-500A	EA	8
6	70	PAHZZ	5305-00-022-8321	A7472-5	07639	SCREW,MACHINE USED ON ROTATING SECTION MGE23-400, MGE23-400A,MGE23-500A	EA	2
6	71	XDHZZ		A9188	07639	CLAMP USED ON ROTATING SECTION MGE23-400,MGE23-400A, MGE23-500A	EA	2
6	72	PAHHH	5910-00-879-3806	SA10321	07639	CAPACITOR UNIT USED ON ROTATING SECTION MGE23-400, MGE23-400A,MGE23-500A	EA	2
6	73	XDHZZ		5024	77147	TERMINAL,LUG USED ON ROTATING SECTION MGE23-400, MGE23-400A,MGE23-500A	EA	2
6	74	PAHZZ	5910-00-054-6065	121P10502S1	56289	CAPACITOR,FXD,PAPER USED ON ROTATING SECTION MGE23-400,MGE23-400A,MGE23-500A	EA	2
6	75	XDHZZ		C4391	07639	ENDBELL USED ON ROTATING SECTION MGE23-400, MGE23-400A,MGE23-500A	EA	1

## SECTION II

(1) ILLUSTRATION (A) FIG NO	(2) (B) ITEM NO	(3) SMR CODE	(4) NATIONAL STOCK NUMBER	(5) PART NUMBER	(6) FSCM	(6) DESCRIPTION	(7) USABLE ON CODE	(8) QTY INC IN UNIT
6	76	PAHHH	5977-00-607-7985	SB6155	07639	HOLDER,BRUSH ASSY USED ON ROTATING SECTION MGE23-400, MGE23-400A,MGE-500A	EA	2
6	77	XDHZZ		C4102	07639	HOLDER,BRUSH USED ON ROTATING SECTION MGE23-400, MGE23-400A,MGE23-500A	EA	2
6	78	PAHZZ	5305-00-719-5330	AN565D6H2	88044	SETSCREW USED ON ROTATING SECTION MGE23-400,MGE23-400A, MGE23-500A	EA	2
6	79	XDHZZ		A10373	07639	PIN USED ON ROTATING SECTION MGE23-400,MGE23-400A, MGE23-500A	EA	2
6	80	PAHZZ	5340-00-689-9969	A10438	07639	SPRING,HELICAL USED ON ROTATING SECTION MGE23-400, MGE23-400A,MGE23-500A	EA	2
6	81	PAHZZ	6125-00-935-0296	SC4401-2	07639	ENDBELL USED ON ROTATING SECTION MGE23-400, MGE23-400A,MGE23-500A	EA	1
6	82	PAHZZ	6125-00-652-0722	A10387	07639	PLATE,BEARING USED ON ROTATING SECTION MGE23-400, MGE23-400A,MGE23-500A	EA	1
6	83	PAHZZ	5940-00-755-9659	33460	00779	TERMINAL,LUG USED ON ROTATING SECTION MGE23-400, MGE23-400A,MGE23-500A	EA	1
6	84	XDHZZ		D688	07639	STATOR,DC USED ON ROTATING SECTION MGE23-400, MGE23-400A,MGE23-500A	EA	1

SECTION IV

NATIONAL STOCK NUMBER AND PART NUMBER INDEX

NOTE: LATEST NATIONAL STOCK NUMBER AND PART NUMBER ASSIGNMENTS ARE INCLUDED AT END OF INDEX.

STOCK NUMBER	FIGURE NO	ITEM NO	STOCK NUMBER	FIGURE NO	ITEM NO
5305-00-018-7180	6	66	5310-00-638-6753	4	10
5305-00-022-8321	6	70	6125-00-652-0722	6	82
5305-00-022-8322	2	100	5940-00-655-3318	2	51
5935-00-027-8915	2	88	6125-00-657-2041	6	58
5310-00-045-3299	2	42	5940-00-665-5592	2	97
5310-00-045-3299	6	37	5940-00-682-8604	2	40
5310-00-045-4007	2	18	6125-00-683-0505	6	23
5310-00-045-4007	4	12	5935-00-683-7651	2	85
5910-00-054-6065	6	74	5910-00-688-6221	6	16
6125-00-056-8743	6	61	3110-00-689-7392	6	22
5961-00-087-6047	5	43	5340-00-689-9969	6	80
5910-00-087-7186	2	75	5315-00-691-0032	6	24
5940-00-114-1305	6	65	5940-00-717-5790	2	13
5310-00-136-1471	2	16	5940-00-755-9659	2	52
5961-00-137-4400	5	31	5940-00-755-9659	6	83
5910-00-137-4401	5	47	5940-00-813-0698	6	26
5910-00-137-4411	5	42	5940-00-828-7046	2	98
5310-00-167-0816	2	12	5940-00-867-7806	5	46
5310-00-167-0816	3	4	5305-00-889-2997	5	57
5310-00-167-0816	4	11	5305-00-889-2998	2	38
5310-00-167-0816	6	4	5305-00-889-2998	4	6
5310-00-167-0834	2	27	5305-00-889-3001	2	39
5310-00-167-0834	6	67	5910-00-891-8294	2	96
5950-00-172-4947	5	26	5961-00-891-8297	5	33
5310-00-177-1156	2	8	6125-00-895-1015	6	43
5310-00-184-8970	2	7	6125-00-895-1016	6	52
5961-00-190-5937	5	29	5340-00-895-1642	4	7
5315-00-221-0465	2	58	5340-00-896-5093	2	20
5961-00-222-1541	5	30	5340-00-896-5093	6	17
5360-00-224-9633	6	41	5940-00-896-9934	2	73
5310-00-261-8278	2	15	5940-00-896-9934	6	49
5310-00-282-4777	2	45	5305-00-897-7125	2	41
5310-00-437-8523	2	6	5940-00-926-9741	2	57
5935-00-500-5018	2	32	5940-00-926-9741	2	66
5310-00-515-8058	2	24	5940-00-926-9741	6	11
5310-00-515-8058	6	2	5940-00-926-9741	6	30
3120-00-540-7087	6	69	5940-00-926-9741	6	32
5310-00-543-2410	2	37	5310-00-934-9739	2	34
5310-00-543-2410	4	4	5310-00-934-9739	4	3
5310-00-543-2410	5	59	5310-00-934-9739	5	58
5310-00-559-0070	6	20	5310-00-934-9747	4	13
5940-00-577-3807	5	2	6125-00-935-0296	6	81
5940-00-577-3807	5	6	5310-00-950-1310	2	36
5940-00-577-3807	5	8	5310-00-950-1310	5	60
5940-00-577-3807	5	11	6125-00-970-5301	6	7
5940-00-577-3807	5	14	5935-00-973-4711	2	81
5305-00-579-3014	6	60	5305-00-984-4992	2	17
6125-00-583-9517	6	44	5305-00-984-6196	6	53
5977-00-607-7985	6	76	5305-00-984-7361	2	21
5305-00-637-1124	6	36	5305-00-984-7363	2	22
5310-00-638-6753	2	78	6125-00-988-7123	6	45

PART NUMBER	FSCM	FIG NO	ITEM NO	PART NUMBER	FSCM	FIG NO	ITEM NO
AN316C4R	88044	2	45	A10337	07639	2	44
AN340-4	88044	3	7	A10373	07639	6	79
AN508-8-4	88044	6	19	A10384	07639	6	59
AN508-8-6	88044	6	36	A10385	07639	6	56
AN515-4R6	88044	3	11	A10387	07639	6	82
AN515-4R7	88044	3	9	A10389	07639	6	54
AN515-6R6	88044	3	10	A10390	07639	6	24
AN515-6R7	88044	3	2	A10395	07639	6	69
AN565D6H2	88044	6	78	A10410	07639	6	5
AN935-4	88044	3	12	A10438	07639	6	80
AN935-6	88044	3	3	A10440-1	07639	6	60
AN960-10L	88044	2	27	A10445	07639	2	77
AN960-10L	88044	6	67	A15110	07639	6	43
AN960-6	88044	2	12	A15118	07639	6	42
AN960-6	88044	3	4	A15128	07639	6	52
AN960-6	88044	4	11	A15667-2	07639	3	8
AN960-6	88044	6	4	A15884-8	07639	6	22
AN960-8	88044	2	24	A19206	07639	2	46
AN960-8	88044	6	2	A19257	07639	2	59
AN961-10T	88044	2	16	A19386	76663	2	53
AN961-416T	88044	2	8	A20204-8	07639	5	55
A10305	07639	2	91	A3637-3	07639	2	68
A10305	07639	2	93	A3736-3	07639	2	19
A10312	71768	2	32	A5262-A	07639	2	55
A10318	07639	2	99	A5262-4	07369	2	64
A10333	07639	2	103	A5262-6	07639	6	27

TM11-6125-240-34P  
SECTION IV  
NATIONAL STOCK NUMBER AND PART NUMBER INDEX

PART NUMBER	FSCM	FIG NO	ITEM NO	PART NUMBER	FSCM	FIG NO	ITEM NO
A5262B2	07639	6	35	HCL-8AWG	81705	6	33
A5262C1	07639	2	56	K204647	07639	6	25
A5262C1	07639	2	65	K20893	07639	2	95
A5262C1	07639	2	83	K20896	07639	2	79
A5262GR	07639	2	90	K20897	07639	2	48
A7471-10	07639	2	67	K22276	07639	6	6
A7471-5	07639	6	3	K22278	07639	6	21
A7471-6	07639	2	102	K22672	07639	2	10
A7471-6	07639	6	13	K22673	07639	2	9
A7471-9	07639	2	11	K24498	07639	6	9
A7472-10	07639	2	28	K29747	07639	5	13
A7472-10	07639	6	57	K29748	07639	5	10
A7472-5	07639	6	70	K29749	07639	5	4
A7472-6	07639	2	100	K29750	07639	5	7
A7472-8	07639	2	23	K29751	07639	5	1
A7472-8	07639	6	1	K29764	07639	5	54
A7668	07639	2	101	K29773	07639	5	44
A8044-12	07639	6	66	K30093	07639	6	51
A8044-14	07639	6	68	K30623	07639	2	33
A8044-6	07639	2	26	MGE23-400	07639	1	2
A8217-6	07639	6	50	MGE23-400A	07639	1	2
A9188	07639	6	71	MGE23-500A	07639	1	2
A9419-9	07639	2	31	MR751	04713	5	30
BWH1000HMSPOORM5PCT1-2W	75042	5	28	MS17322-10	96906	2	35
B6115	07639	2	43	MS20365-428C	96906	6	38
B6150	07639	6	12	MS25046-1	96906	2	40
B6167	07639	2	86	MS25087-1	96906	2	4T
B6484	07639	2	29	MS35191-270	96906	2	21
B8507	07639	2	69	MS35191-272	96906	2	22
B8900-60	07639	5	56	MS35206-215	96906	5	57
CL032-2	46384	2	78	MS35206-216	96906	2	38
CL032-2	46384	4	10	MS35206-216	96906	4	6
CP08A3K8103K3	81349	6	16	MS35206-231	96906	2	39
CSV1186-1	07639	1	1	MS35206-232	96906	2	17
CSV2215-2	07639	1	1	MS35206-236	96906	4	2
CSV2215-3	07639	1	1	MS35206-248	96906	6	53
C4102	07639	6	77	MS35333-38	96906	6	20
C4108	07639	6	44	MS35338-100	96906	2	15
C4112-2	07639	2	1	MS35338-101	96906	2	7
C4391	07639	6	75	MS35338-40	96906	2	37
C4397	07639	6	58	MS35338-40	96906	4	4
C45763	96733	2	75	MS35338-40	96906	5	59
D225-4	07639	6	46	MS35338-41	96906	2	18
D650-2	07639	2	80	MS35338-41	96906	4	12
D650-4	07639	2	80	MS35338-42	96906	2	42
D651	07639	6	45	MS35338-42	96906	6	37
D688	07639	6	84	MS36649-242	96906	2	34
D704	07639	6	29	MS35649-242	96906	4	3
EP174	01295	5	37	MS35649-242	96906	5	58
E16AWGBLACK	81349	2	62	MS35649-262	96906	4	13
E18AWGBLACK	81349	2	54	MS35650-305T	96906	2	14
E18AWGBLACK	81349	6	10	MS35650-3255T	96906	2	6
E18AWGBLACK	81349	6	28	NPC3	81074	4	7
E18AWGBLACK	81349	6	34	P10040	07639	2	13
E20AWGBLACK	81349	2	84	P12983	07639	5	49
E20AWGBLACK	81349	2	89	P13072-1	07639	5	26
E20AWGRED	81349	5	3	P13168	07639	5	53
E20AWGWHITE	81349	5	9	P9445	07639	6	55
E20AWGYELLOW	81349	5	5				
E22AWGBLUE	81349	5	15	QQW343-9AWG	81349	2	49
E22AWGPURPLE	81349	5	12	QQW343-9AWG	81349	2	74
E22AWGWHITEANDGREEN	81349	5	18	QQW349-9AWG	81349	6	64
E22AWGWHITEANDORANGE	81349	5	19	RC07GF1000HMSPOORM5	12400	5	35
E22AWGWHITEANDRED	81349	5	17	PCT1-4W			
FA3684C	51932	2	25	RC07GF15KOHMSPOORM5	12400	5	52
FM033MFDPOORM10PCT100VDC	19396	5	34	PCT1-4W			
G6219	07639	4	9	RC07GF240HMSPOORM5PCT1-4W	12400	5	32
G6224-1	07639	3	5				
G6224-2	07639	3	5	RNR60121KOHMSPOORM1PCT1-8W	19701	5	24
G6225-1	07639	3	1				
G6228	77260	2	5	RNR60121KOHMSPOORM1PCT1-8W	19701	5	48
G6228	77260	3	6				
G6228	77260	4	8	RNR6013KOHMSPOORM1PCT1-8W	19701	5	39
G6228-1	07639	2	4				
G7452	07639	2	60	RNR6015KOHMSORM1PCT1-8W	19701	5	21
G7455	07639	2	3				
G7569	07639	2	3	RNR60221KOHMSPOORM1PCT1-8W	19701	5	50
G7703	07639	2	60				
HCL-0AWG	81705	2	47	RNR60261KOHMSPOORM1PCT1-8W	19701	5	27
HCL-2AWGIN13	81705	2	71				
HCL-2AWGIN5	81705	2	72	RNR60301KOHMSPOORM1PCT1-8W	19701	5	22
HCL-6AWG	81705	2	50				



TM11-6125-240-34P  
SECTION IV  
NATIONAL STOCK NUMBER AND PART NUMBER INDEX

PART NUMBER	FSCM	FIG NO	ITEM NO	PART NUMBER	FSCM	FIG NO	ITEM NO
RNR60332KOHMSPORM1PCT1-8W	19701	5	20	YAE22G13	09922	5	8
RNR60681KOHMSPORM1PCT1-8W	19701	5	41	YAE22G13	09922	5	11
SA10321	07639	6	72	YAE22G13	09922	5	14
SA10365-2	07639	2	81	1MFDPOPM10PCT50V	96733	2	96
SA10366-2	07639	2	87	1N4705	12954	5	25
SA10446	07639	2	76	1N645	11711	5	43
SA10449	07639	2	61	105-802	74970	2	85
SA10507	07639	6	31	105-803	74970	2	88
SA10526	07639	2	92	121P10502S1	56289	6	74
SA10619	07639	6	14	150D1MFDPOPM10PCT35VDC	56289	5	40
SB6155	07639	6	76	150D22MFDPOPM10PCT15VDC	56289	5	38
SB6178	07639	6	62	150D56MFDPOPM10PCT6VDC	56289	5	23
SB6487	07639	6	18	1522-5	07639	6	47
SC4107	07639	6	23	1562-1	07639	6	40
SC4396-2	07639	6	8	1562-5	07639	6	39
SC4396-3	07639	6	8	210B1B105K	14752	5	51
SC4398	07639	6	61	3E1	12060	5	29
SC4401-2	07639	6	81	321576	00779	2	73
S1810	76473	6	7	321576	00779	6	49
TA557S4	84971	2	20	33D4387	03508	5	31
TA557S4	84971	6	17	33460	00779	2	52
UT389	12969	5	36	33460	00779	6	83
V2326	07639	4	1	33461	00779	2	51
V2393	07639	2	30	33465	00779	2	70
V2393-3	07639	2	30	33465	00779	6	63
V2576	07639	4	1	34109	00779	6	15
W1351-015	27745	6	41	36272	00779	6	48
YAEV8CL	09922	6	65	36885	02735	5	33
YAE18G15	09922	2	82	4007	77147	5	46
YAE18G43	09922	6	26	4012	00434	2	97
YAE18-N	09922	2	57	5024	77147	6	73
YAE18-N	09922	2	66	551-10K0HMSPORM20PCT2W	71450	5	16
YAE18-N	09922	6	11	625B1B54J	14752	5	47
YAE18-N	09922	6	30	625B1E153J	14752	5	42
YAE18-N	09922	6	32	7S25045-1	96906	2	98
YAE22G13	09922	5	2	8-140	71785	2	104
YAE22G13	09922	5	6	9622-16-00-0242D	02768	2	2
				9822-03-00-0042	02768	2	58

LATEST NATIONAL STOCK NUMBER ASSIGNMENTS

STOCK NUMBER	FIG NO	ITEM NO	STOCK NUMBER	FIG NO	ITEM NO
5305-00-019-1245	2	26	6145-00-669-6564	5	45
5310-00-045-3810	6	59	5305-00-719-5330	6	78
5910-00-087-7186	2	69	5940-00-813-0698	2	63
5310-00-185-6400	6	56	6125-00-822-4447	6	55
6150-00-226-9978	6	46	6125-00-851-0889	3	5
6110-00-229-8137	1	1	5910-00-879-3806	6	72
6645-00-225-1371	2	35	5910-00-891-8294	2	95
5905-00-405-1339	5	16	5905-00-893-5488	2	79
5310-00-410-3025	2	14	5340-00-895-1642	3	8
2990-00-414-7297	2	5	5310-00-950-1310	3	13
2990-00-414-7297	3	6	5310-00-950-1310	4	5
2990-00-414-7297	4	8	6125-00-958-6915	1	2
6110-00-497-9074	1	1	6125-00-958-6915	1	2
5310-00-543-2410	3	12	5977-00-970-5278	6	51
5305-00-552-2023	6	15	5305-00-980-9565	6	47
5305-00-558-8735	6	13	5305-00-984-6223	4	2
5305-00-654-8057	2	11			
5915-00-656-6976	2	25			

LATEST PART NUMBER ASSIGNMENTS

PART NUMBER	FSCM	FIG. NO.	ITEM NO.
MILR25042TYPE1	81349	2	94
MS15795-204	96906	2	36
MS15795-204	96906	3	13
MS15795-204	96906	4	5
MS15795-204	96906	5	60
QQW343-TYPE22AWG	81348	5	45
YAE518N-1	09922	2	63



By Order of the Secretary of the Army:

**BERNARD W. ROGERS**  
*(General United States Army  
Chief of Staff*

Official:

**J.C. PENNINGTON**  
*Brigadier General, United States Army  
The Adjutant General*

Distribution:

To be distributed in accordance with DA Form 12-36, Direct and General Support maintenance requirements for PU-545/A.



RECOMMENDED CHANGES TO EQUIPMENT TECHNICAL MANUALS



**SOMETHING WRONG WITH THIS MANUAL?**

THEN...JOT DOWN THE DOPE ABOUT IT ON THIS FORM, TEAR IT OUT, FOLD IT AND DROP IT IN THE MAIL!

FROM: (YOUR UNIT'S COMPLETE ADDRESS)

Commander  
Stateside Army Depot  
ATTN: AMSTA-US  
Stateside, N.J. 07703

DATE 10 July 1975

PUBLICATION NUMBER

TM 11-5840-340-12

DATE

23 Jan 74

TITLE

Radar Set AN/SPS-76

BE EXACT...PIN-POINT WHERE IT IS

IN THIS SPACE TELL WHAT IS WRONG AND WHAT SHOULD BE DONE ABOUT IT:

PAGE NO.	PARA-GRAPH	FIGURE NO.	TABLE NO.
2-25	2-28		
3-10	3-3		3-1
5-6	5-8		
		F03	

Recommend that the installation antenna alignment procedure be changed throughout to specify a 2° IFF antenna lag rather than 1°.

REASON: Experience has shown that with only a 1° lag, the antenna servo system is too sensitive to wind gusting in excess of 20 knots, and has a tendency to rapidly accelerate and decelerate as it hunts, causing strain to the drive train. Hunting is minimized by adjusting the lag to 2° without degradation of operation.

Item 5, Function column. Change "2 db" to "3db."

REASON: The adjustment procedure for the TRANS POWER FAULT indicator calls for a 3 db (500 watts) adjustment to light the TRANS POWER FAULT indicator.

Add new step f.1 to read, "Replace cover plate removed in step e.1, above."

REASON: To replace the cover plate.

Zone C 3. On J1-2, change "+24 VDC to "+5 VDC."

REASON: This is the output line of the 5 VDC power supply. + 24 VDC is the input voltage.

TYPED NAME, GRADE OR TITLE, AND TELEPHONE NUMBER

SSG I. M. DeSpirito 999-1776

SIGN HERE:

*SSG I. M. DeSpirito*

DA FORM 2028-2 (TEST) 1 AUG 74

P.S.--IF YOUR OUTFIT WANTS TO KNOW ABOUT YOUR MANUAL "FIND" MAKE A CARBON COPY OF THIS AND GIVE IT TO YOUR HEADQUARTERS.

HISA 1686-75

ALONG DOTTED LINE





FILL IN YOUR  
UNIT'S ADDRESS

FOLD BACK

DEPARTMENT OF THE ARMY

OFFICIAL BUSINESS

Commander  
US Army Electronics Command  
ATTN: DRSEL-MA-Q  
Fort Monmouth, New Jersey 07703

FOLD BACK

TEAR ALONG DOTTED LINE



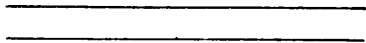


FILL IN YOUR  
UNIT'S ADDRESS



FOLD BACK

DEPARTMENT OF THE ARMY



OFFICIAL BUSINESS

Commander  
US Army Electronics Command  
ATTN: DRSEL-MA-Q  
Fort Monmouth, New Jersey 07703

FOLD BACK

TEAR ALONG DOTTED LINE

RECOMMENDED CHANGES TO EQUIPMENT TECHNICAL MANUALS



# SOMETHING WRONG WITH THIS MANUAL?

THEN... JOT DOWN THE DOPE ABOUT IT ON THIS FORM, TEAR IT OUT, FOLD IT AND DROP IT IN THE MAIL!

FROM: (YOUR UNIT'S COMPLETE ADDRESS)

DATE

PUBLICATION NUMBER

DATE

TITLE

TM 11-6125-240-34P

3 Jan 78

BE EXACT... PIN-POINT WHERE IT IS

IN THIS SPACE, TELL WHAT IS WRONG AND WHAT SHOULD BE DONE ABOUT IT:

PAGE NO.	PARA-GRAPH	FIGURE NO.	TABLE NO.

TYPED NAME, GRADE OR TITLE, AND TELEPHONE NUMBER

SIGN HERE:

TEAR ALONG DOTTED LINE

FILL IN YOUR  
UNIT'S ADDRESS

FOLD BACK

DEPARTMENT OF THE ARMY

OFFICIAL BUSINESS

Commander  
US Army Electronics Command  
ATTN: DRSEL-MA-Q  
Fort Monmouth, New Jersey 07703

FOLD BACK

TEAR ALONG DOTTED LINE



**PIN: 019897-000**